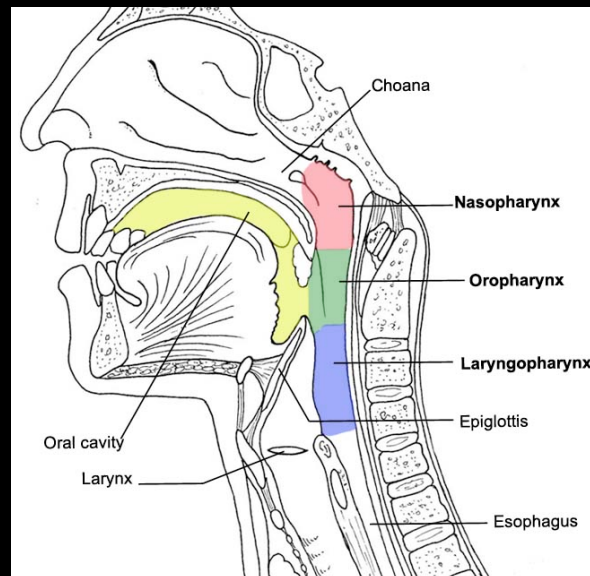


G21B: Pharynx



Group A: Clinical Apps (HSEB 2600)

Group B: Deep face (Cadaver Lab)

Syllabus - Pg. 75

Finish G21A

- go to page 70

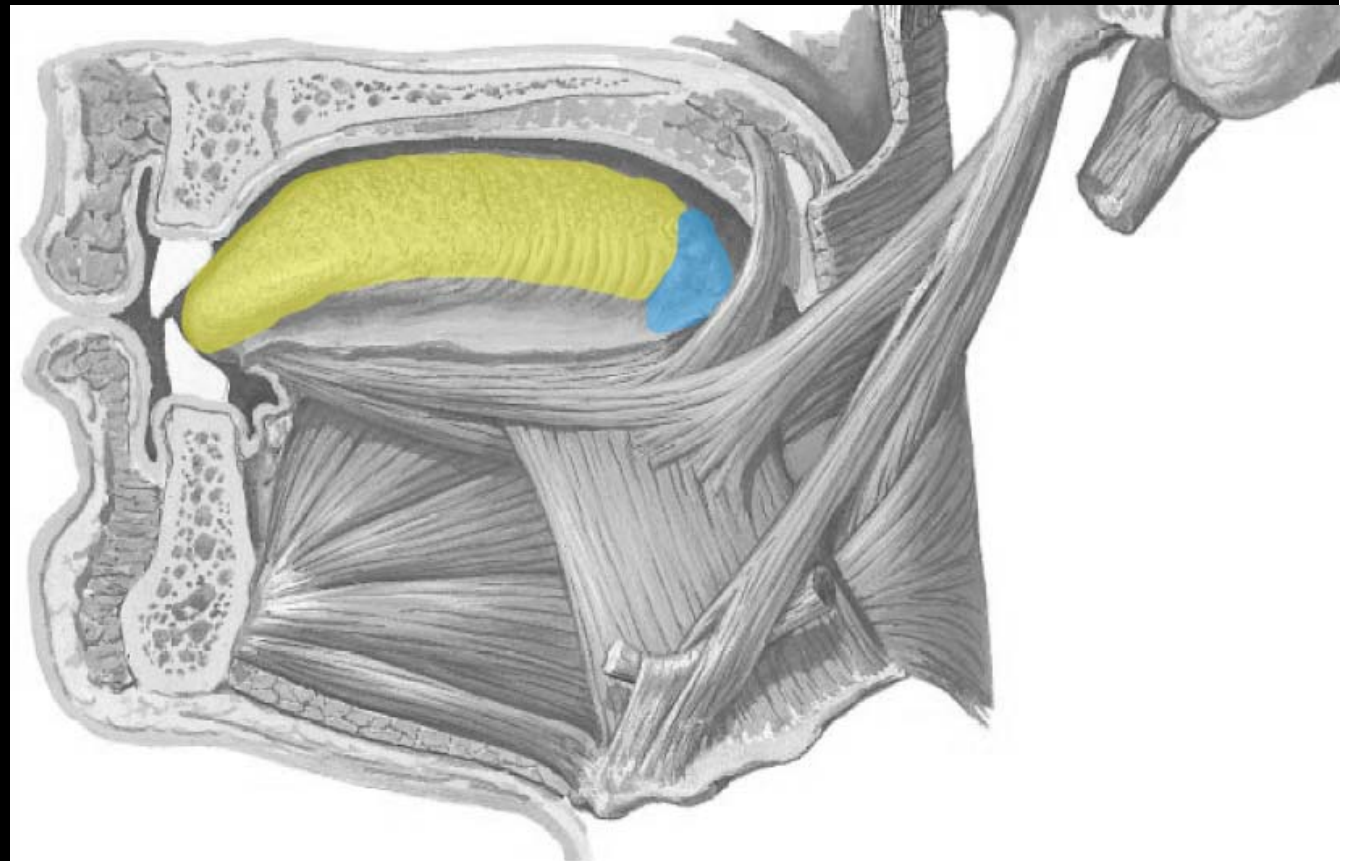
2) Tongue - Innervation

Anterior tongue

- GS
- SS

Posterior tongue

- GS
- SS



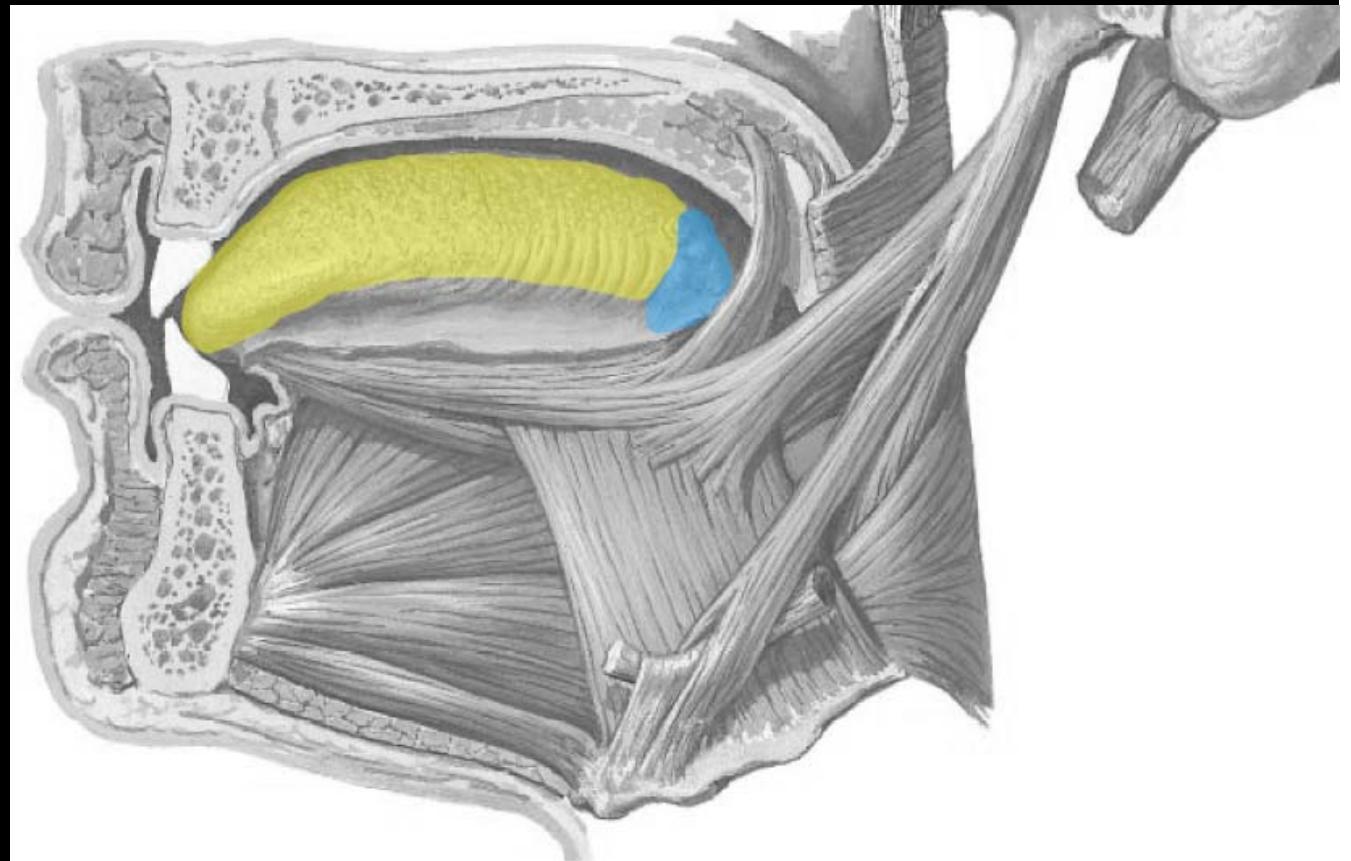
2) Tongue - Innervation

Anterior tongue

- GS - CN V-3 (lingual)
- SS - CN VII (chorda tympani)

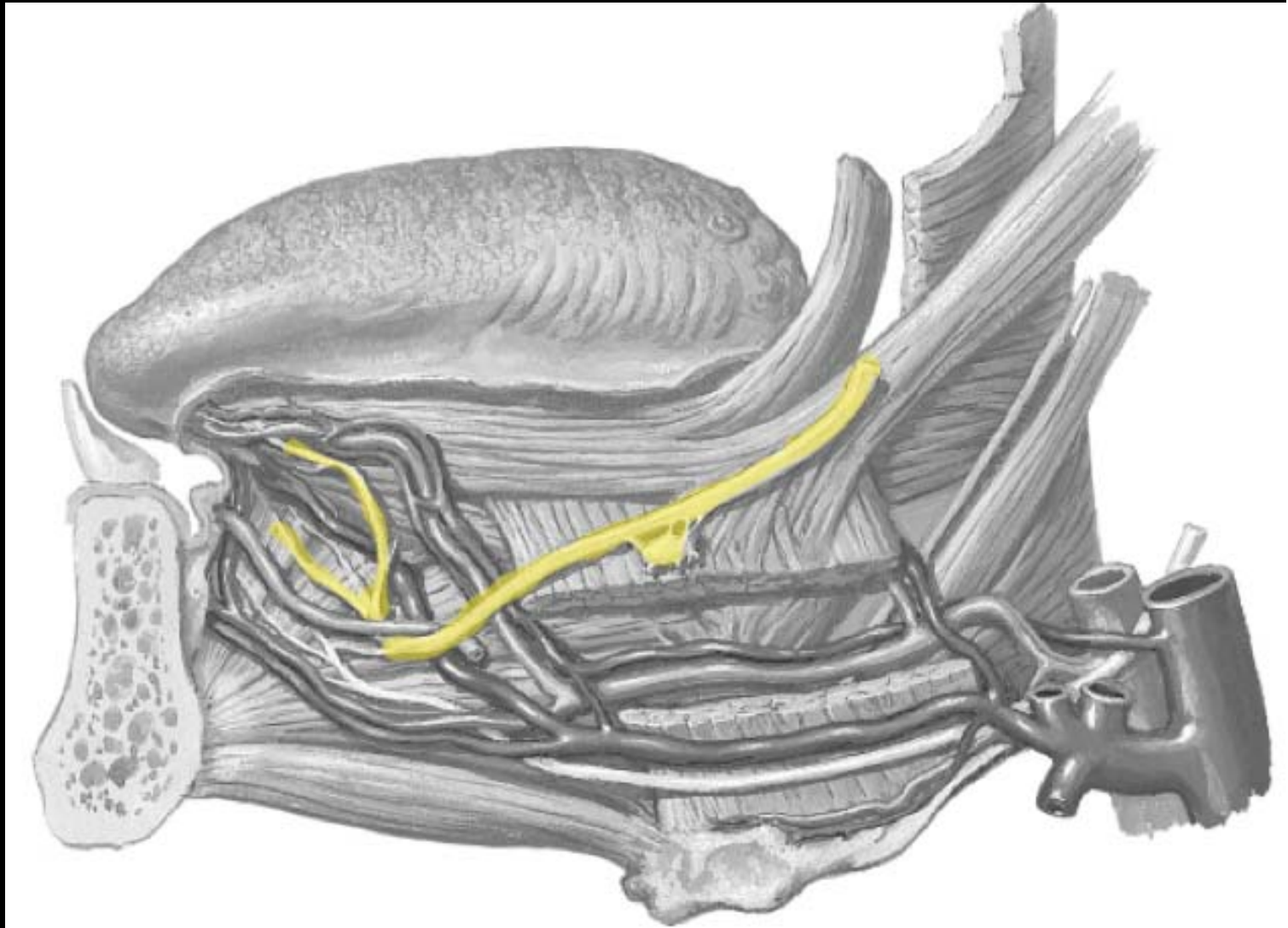
Posterior tongue

- GS - CN IX
- SS - CN IX



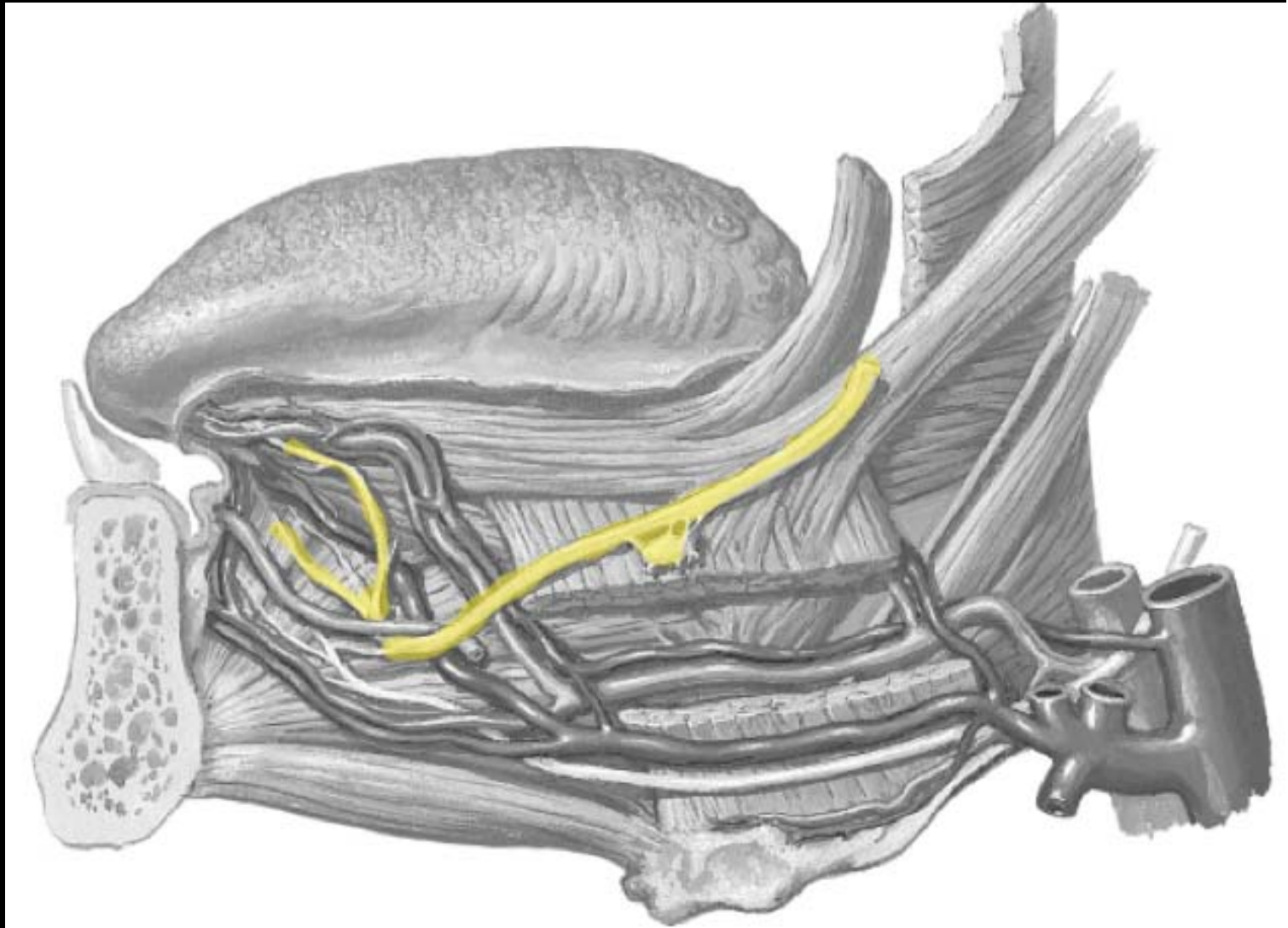
2) Tongue - Innervation

ID the nerve



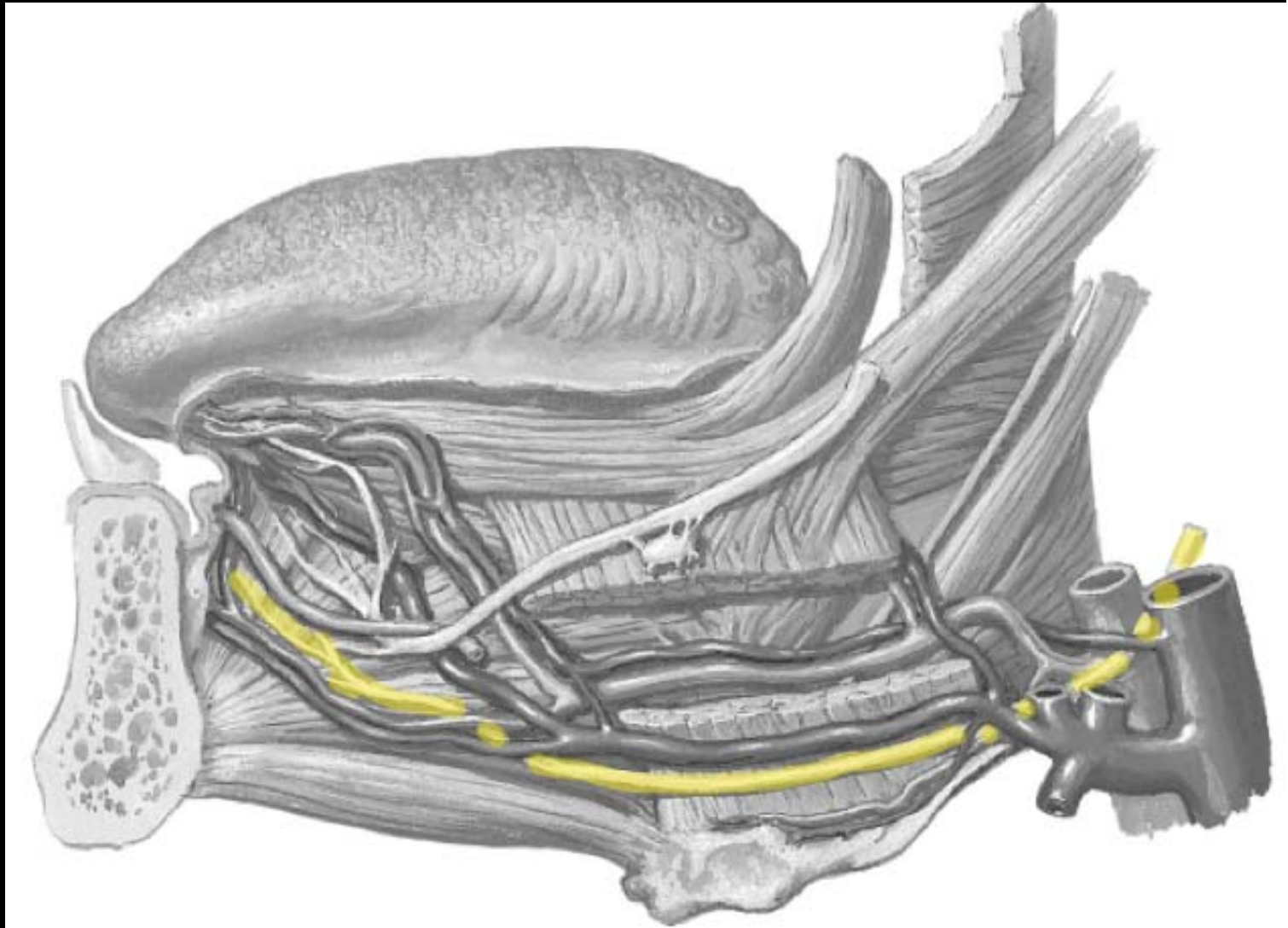
2) Tongue - Innervation

Lingual nerve



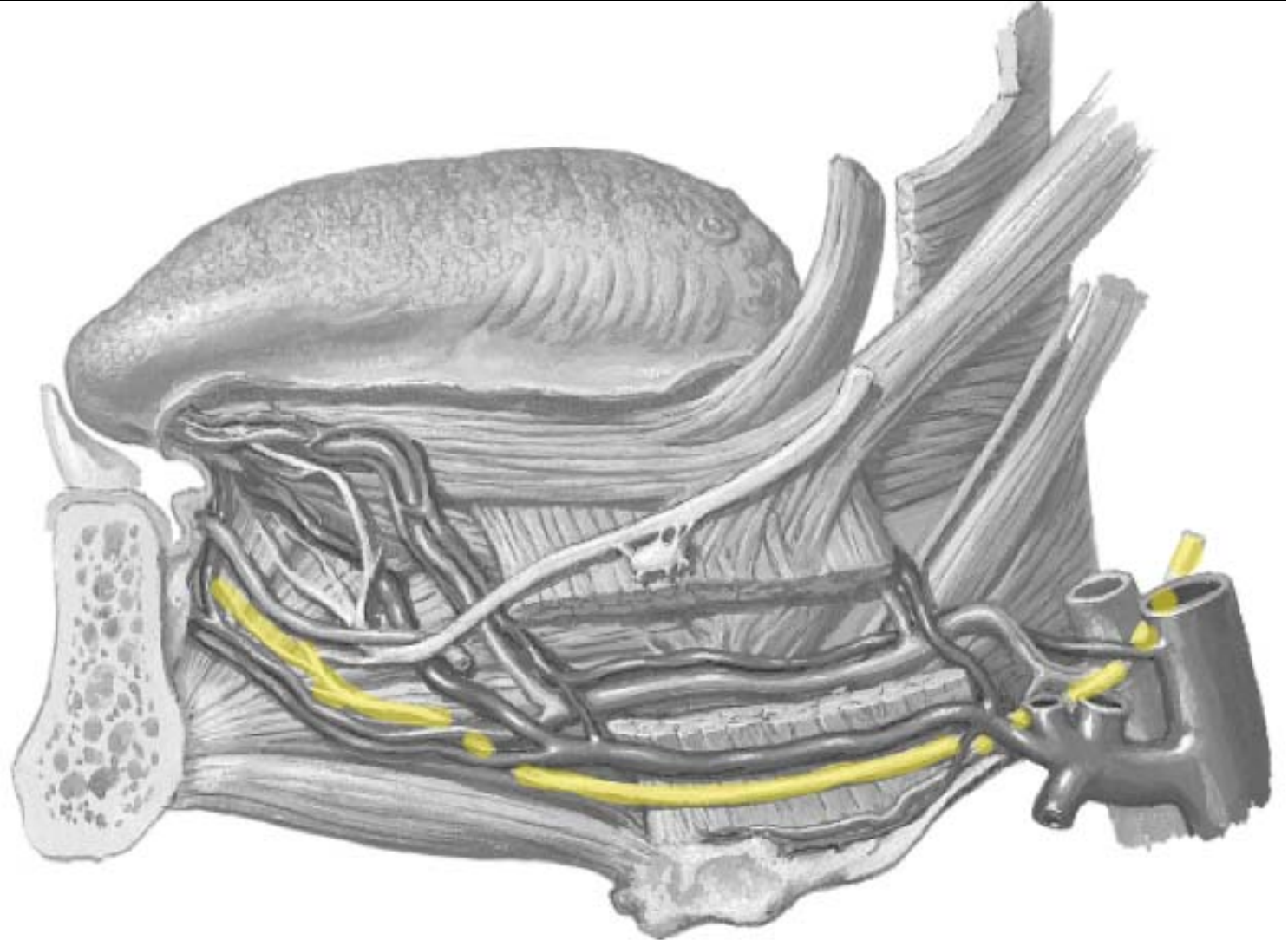
2) Tongue - Innervation

ID the nerve



2) Tongue - Innervation

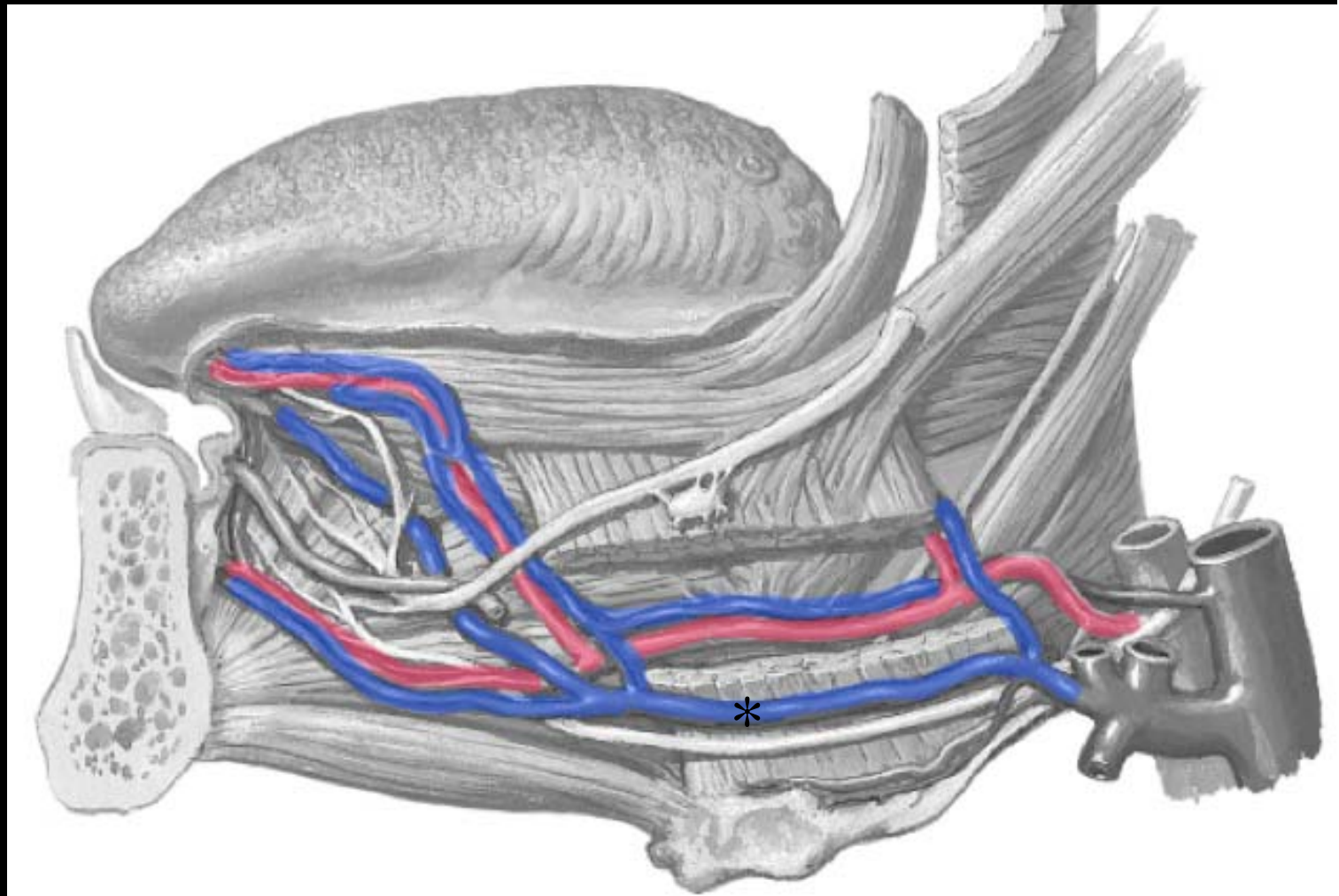
CN XII



2) Tongue - Innervation

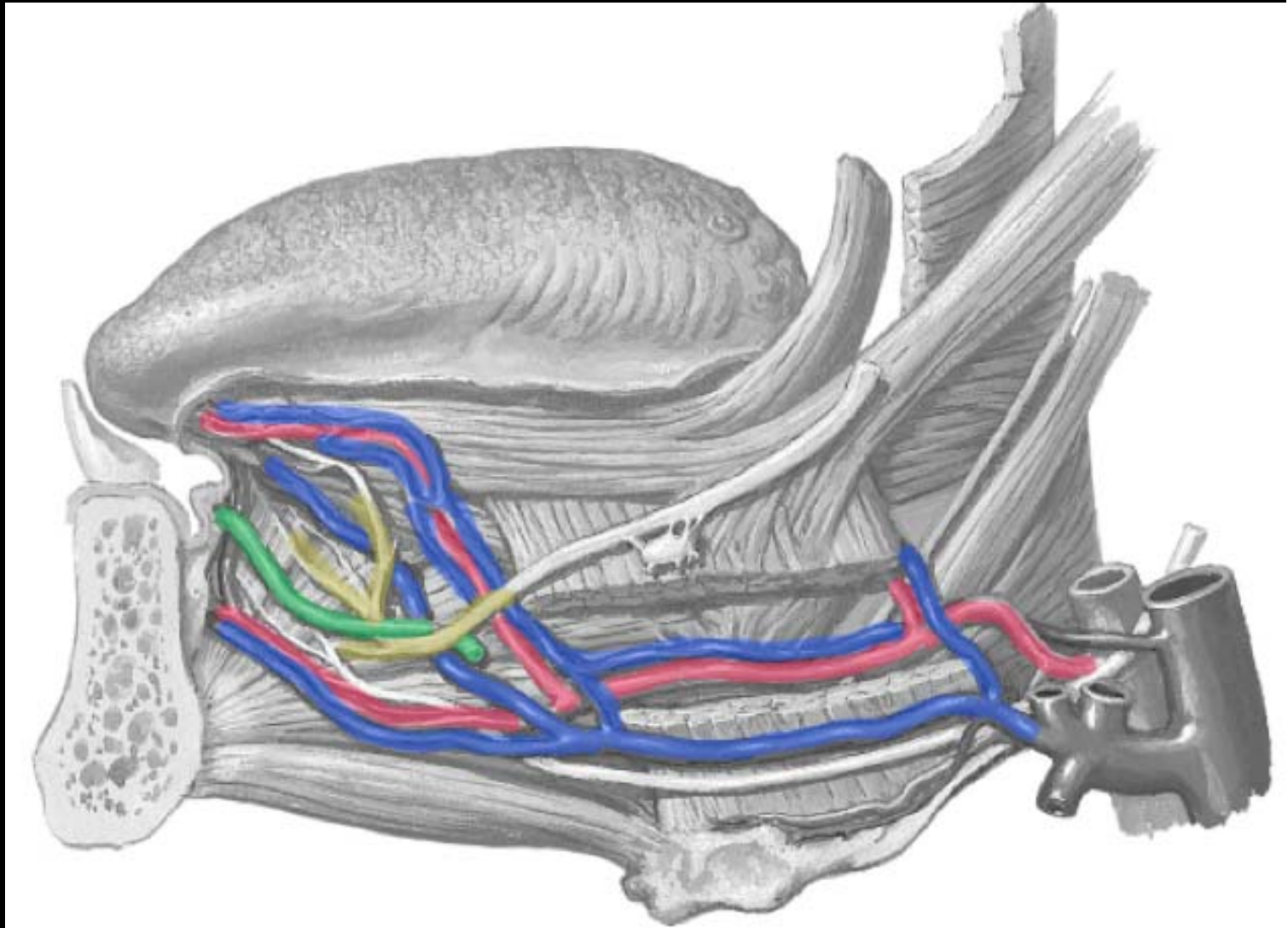
Lingual artery

Lingual vein

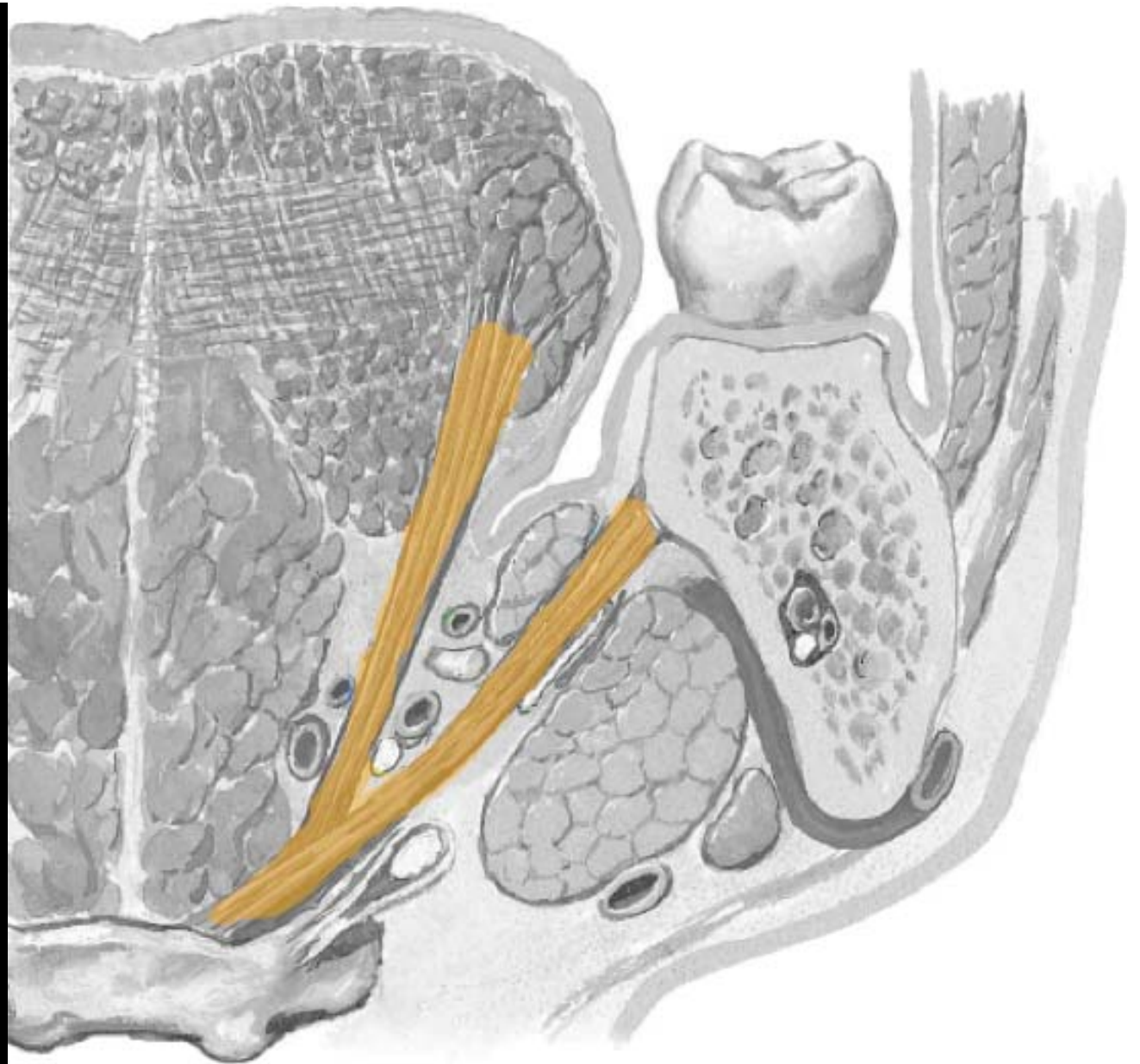


2) Tongue - Innervation

Submandibular duct

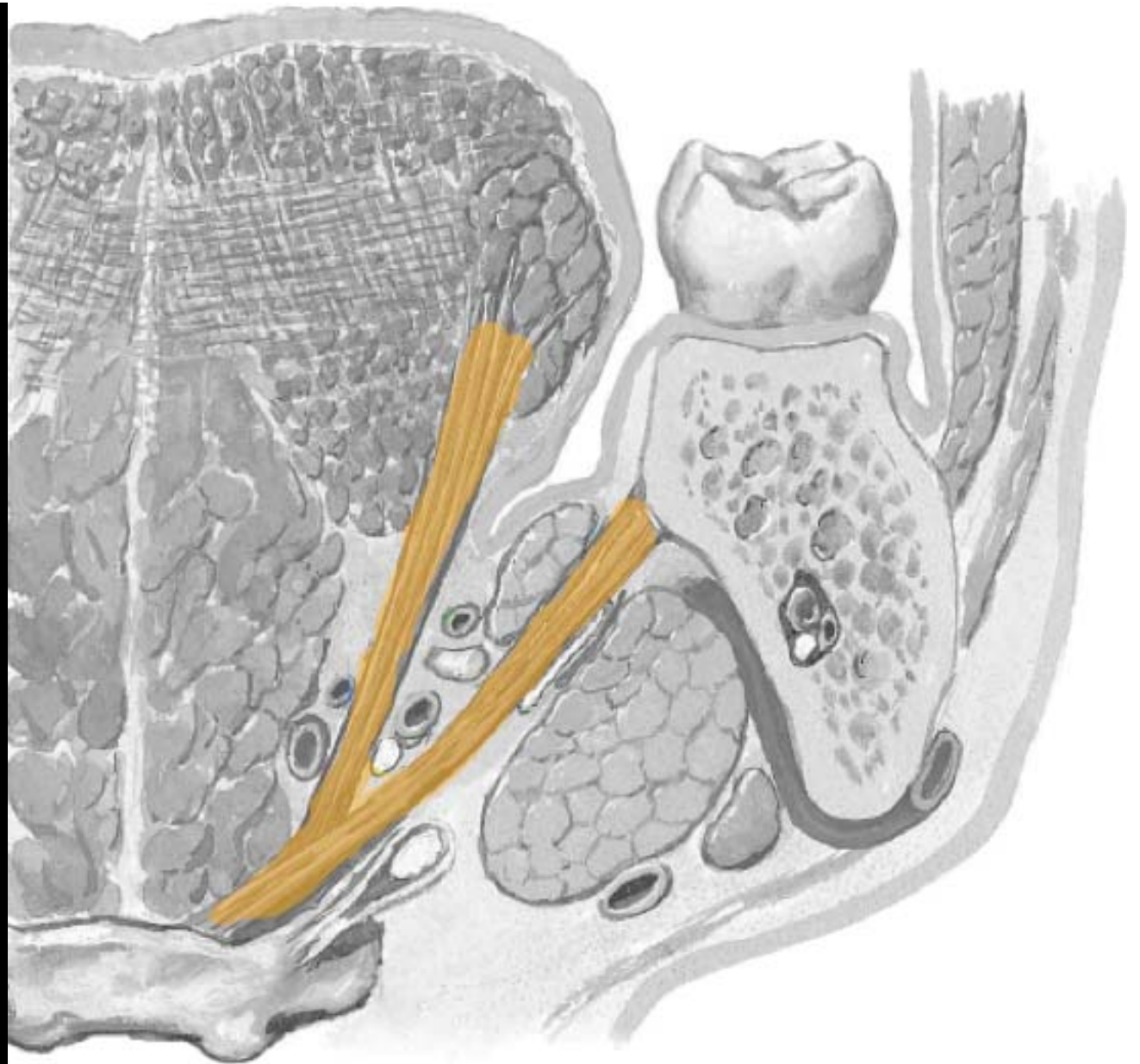


ID the muscles



Coronal Section; Anterior view

Mylohyoid m.
Hyoglossus m.



Coronal Section; Anterior view

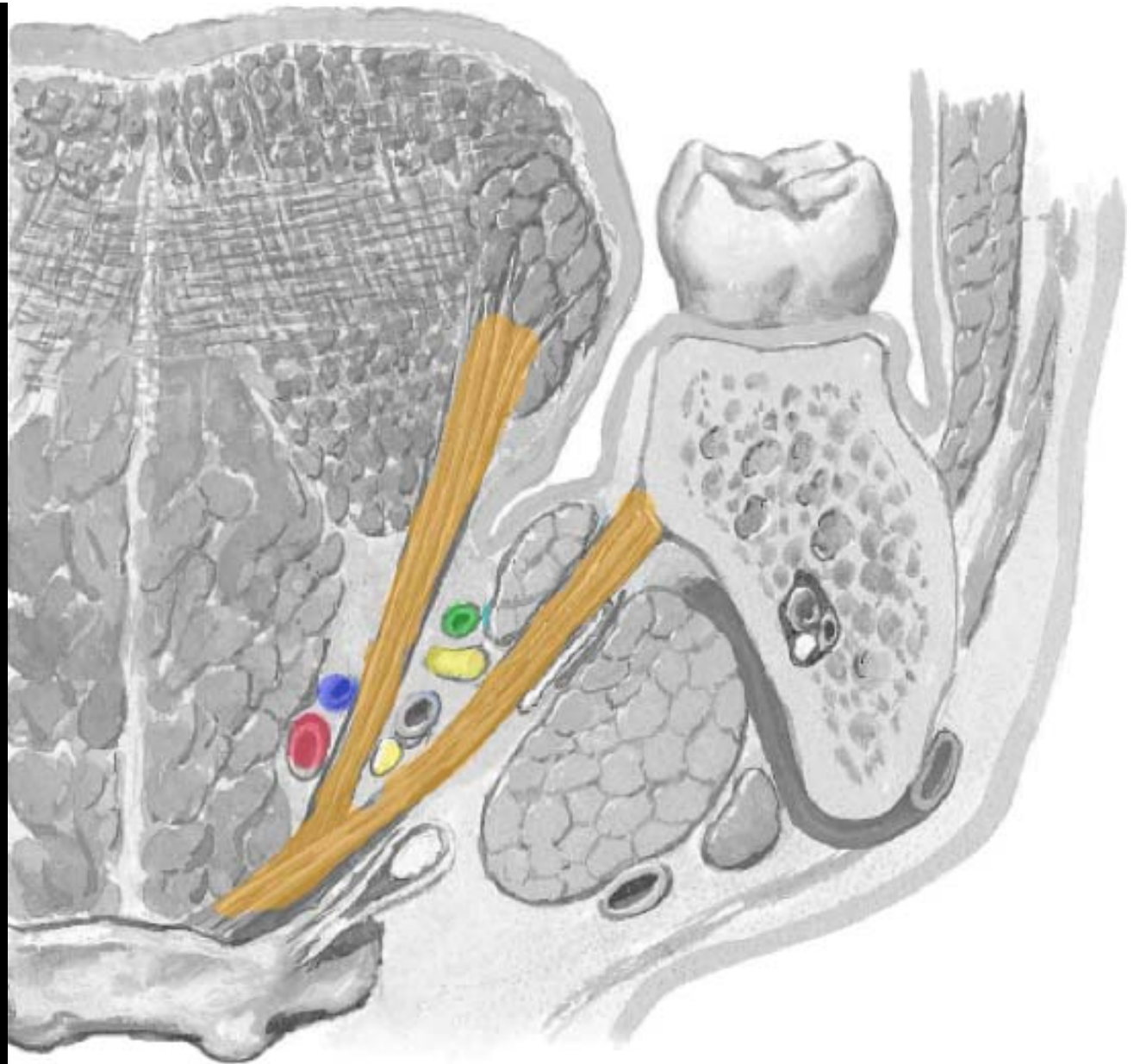
Lingual a.

Lingual v.

CN XII

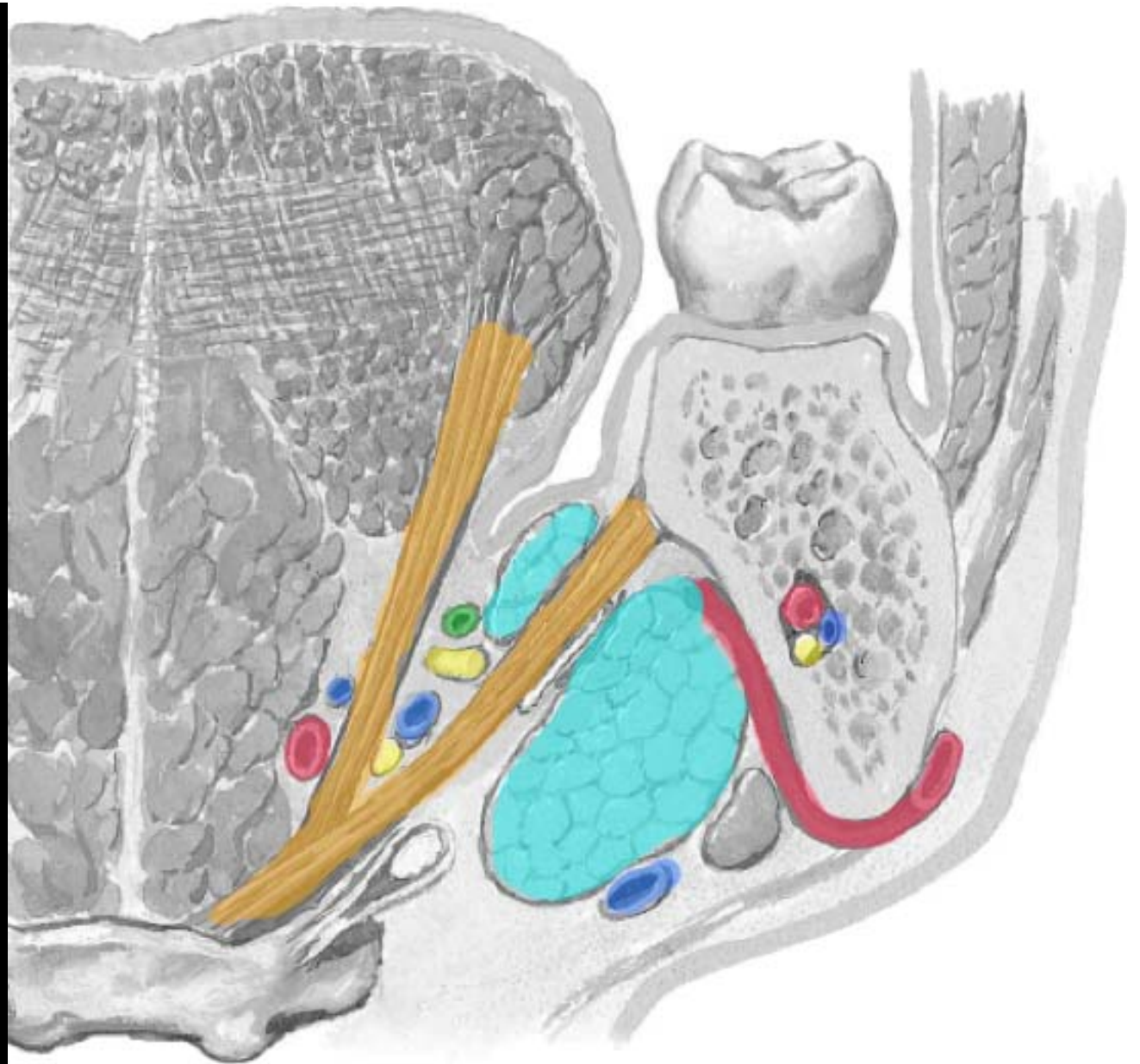
Submandibular duct

Lingual n. (V-3)



Coronal Section; Anterior view

ID the rest of the stuff



Coronal Section; Anterior view

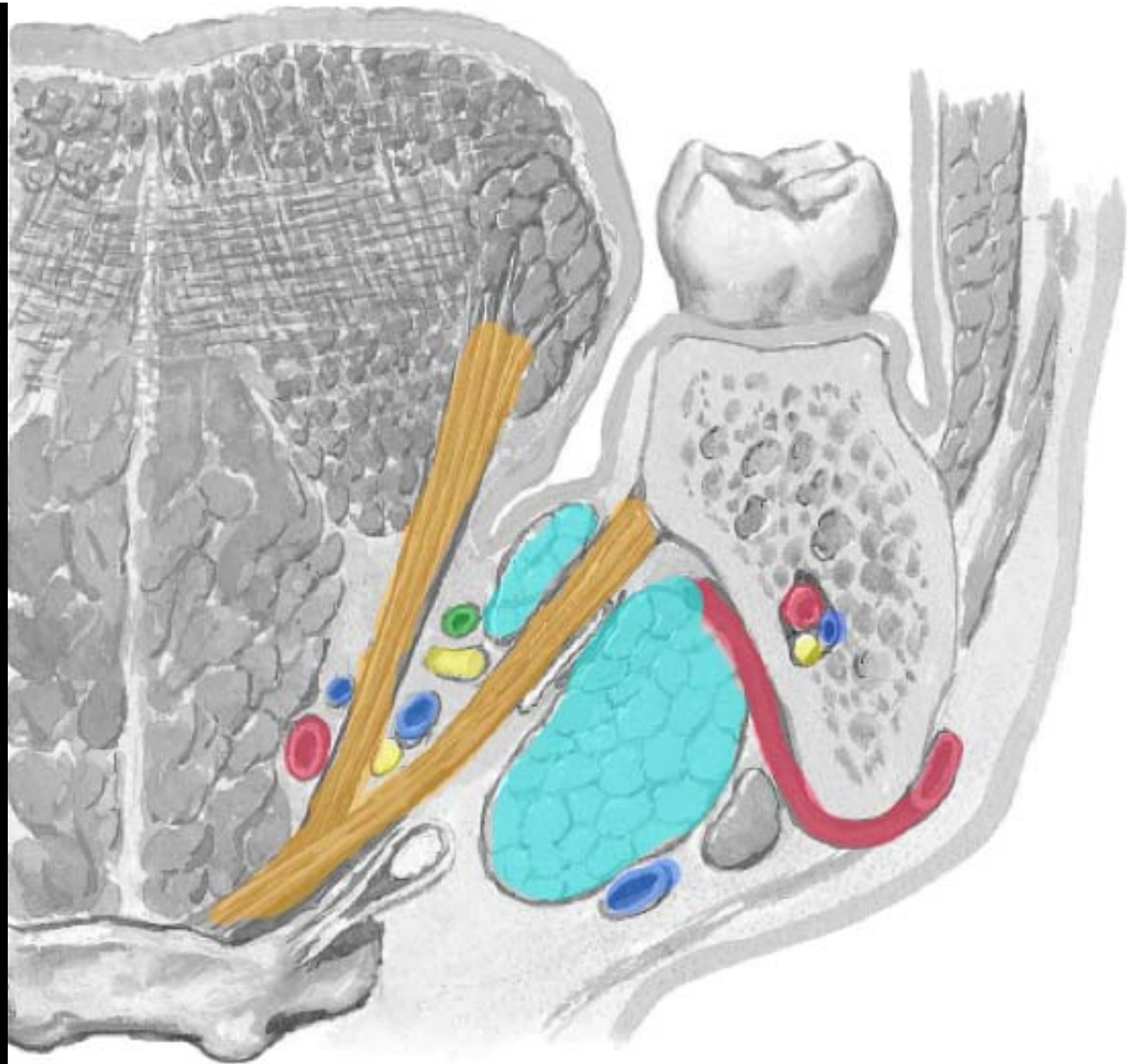
Inferior alveolar n.a.v.

Sublingual gland

Submandibular gland

Facial artery

Facial vein

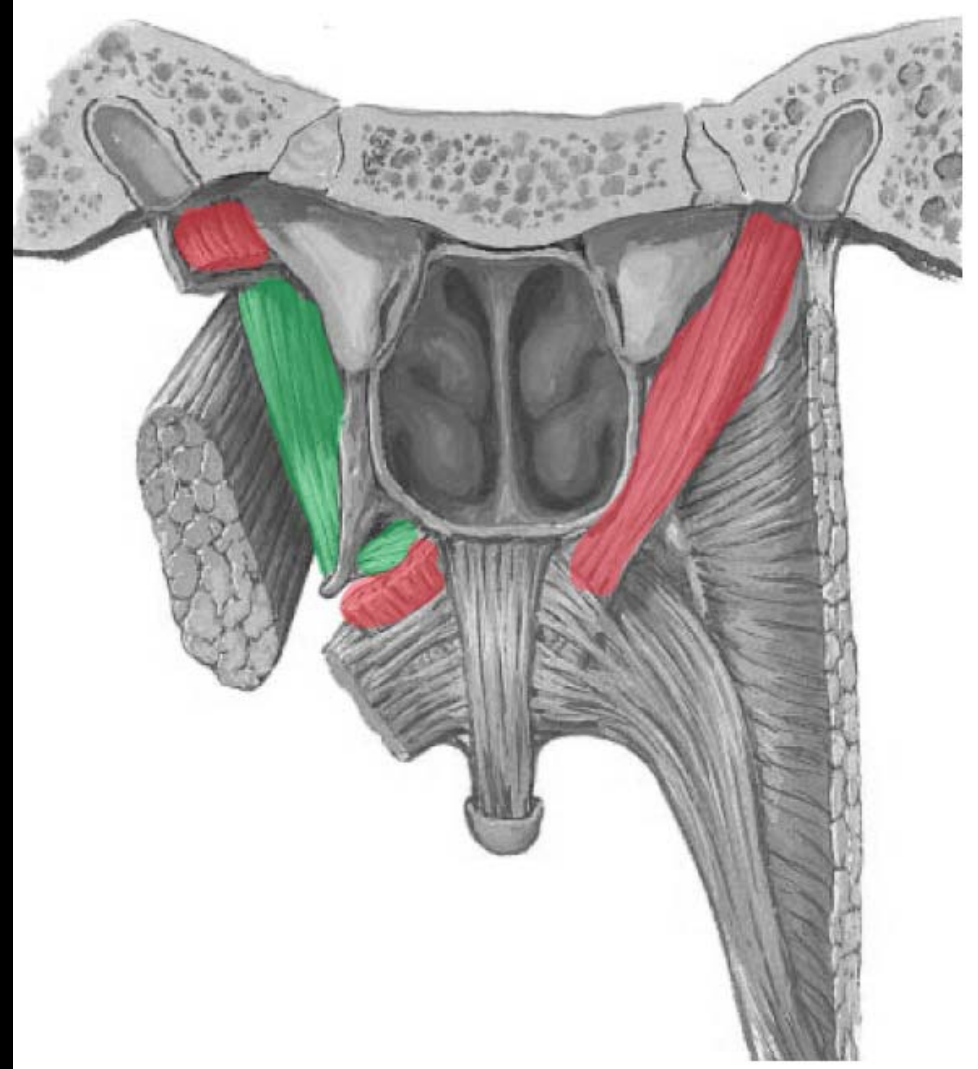


Coronal Section; Anterior view

Palate

Tensor veli palatini m.

Levator veli palatini m.



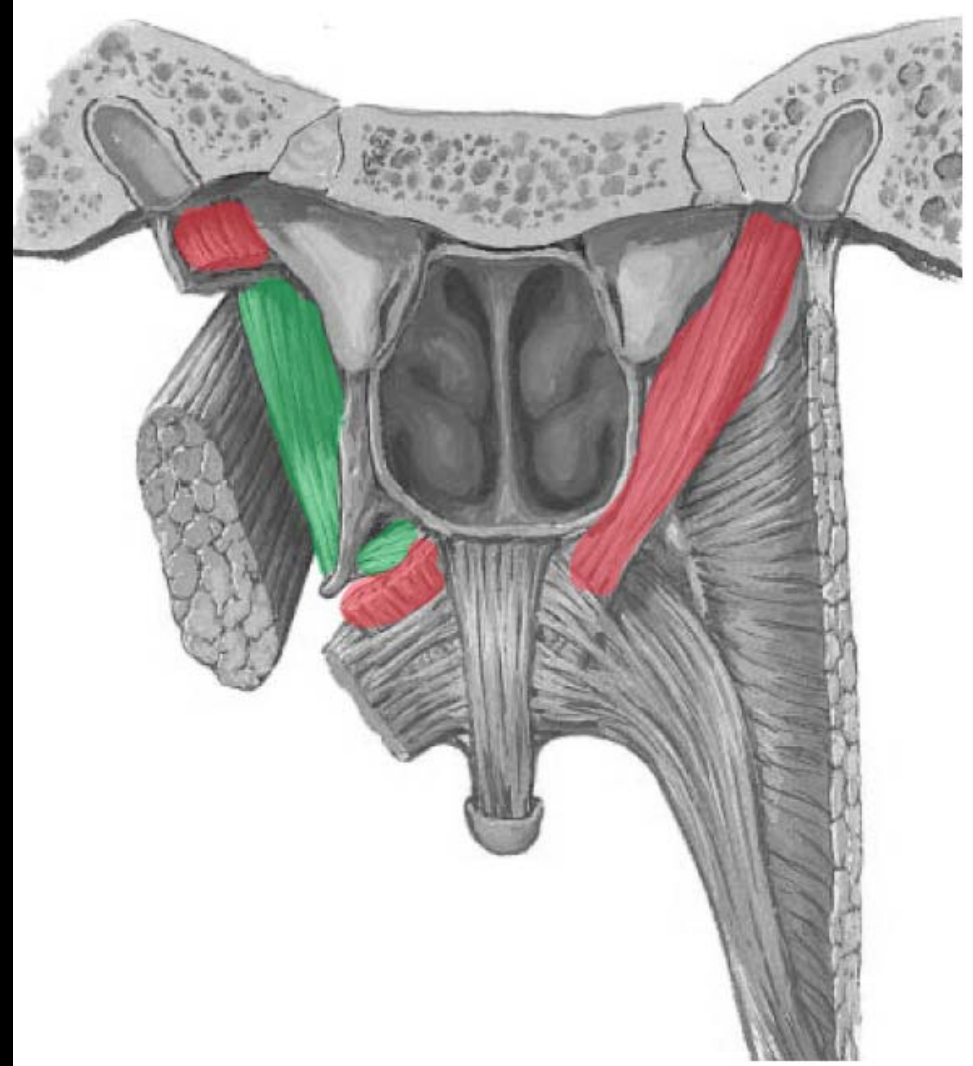
Palate

Tensor veli palatini m.

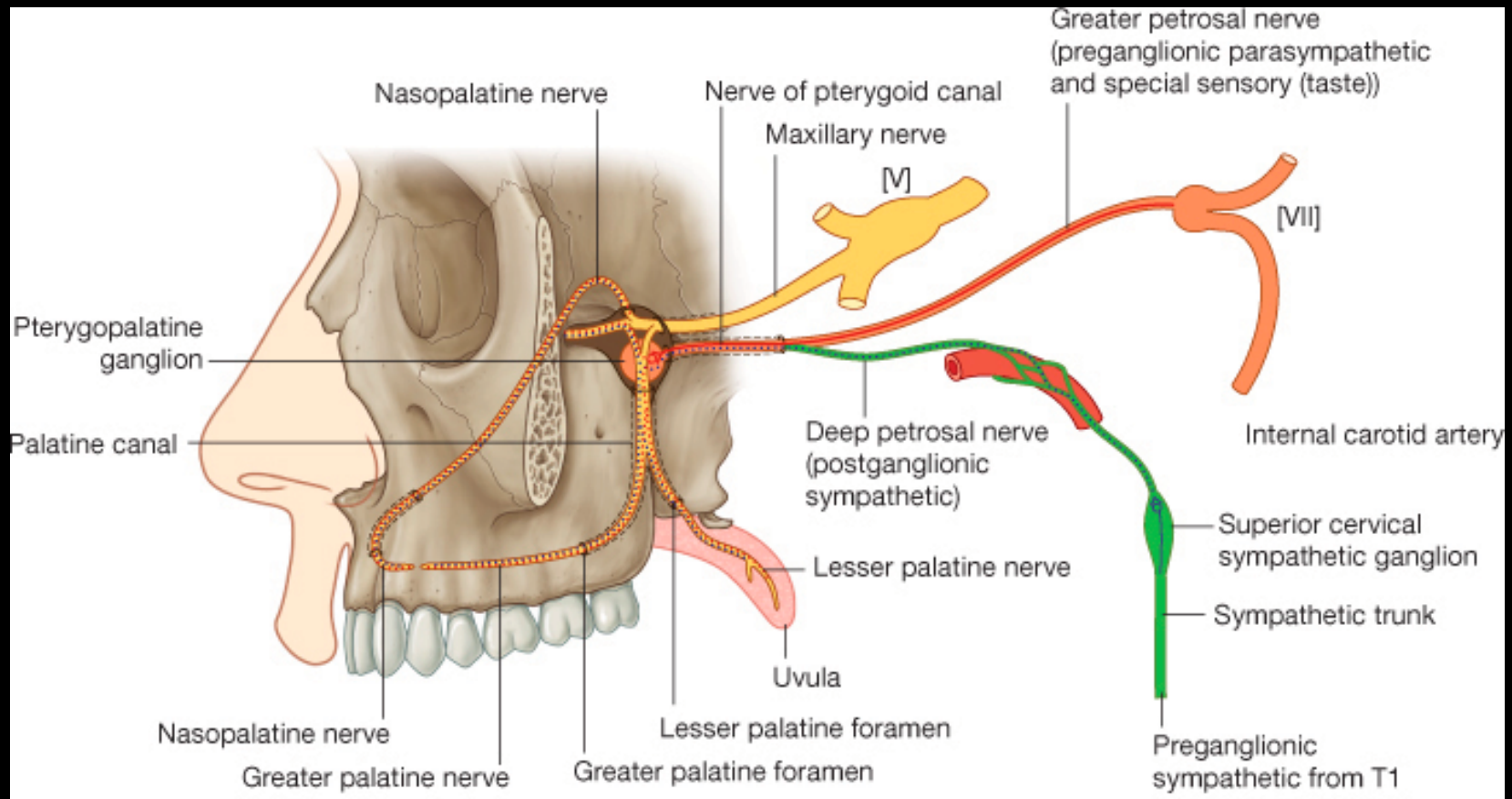
(CN V-3)

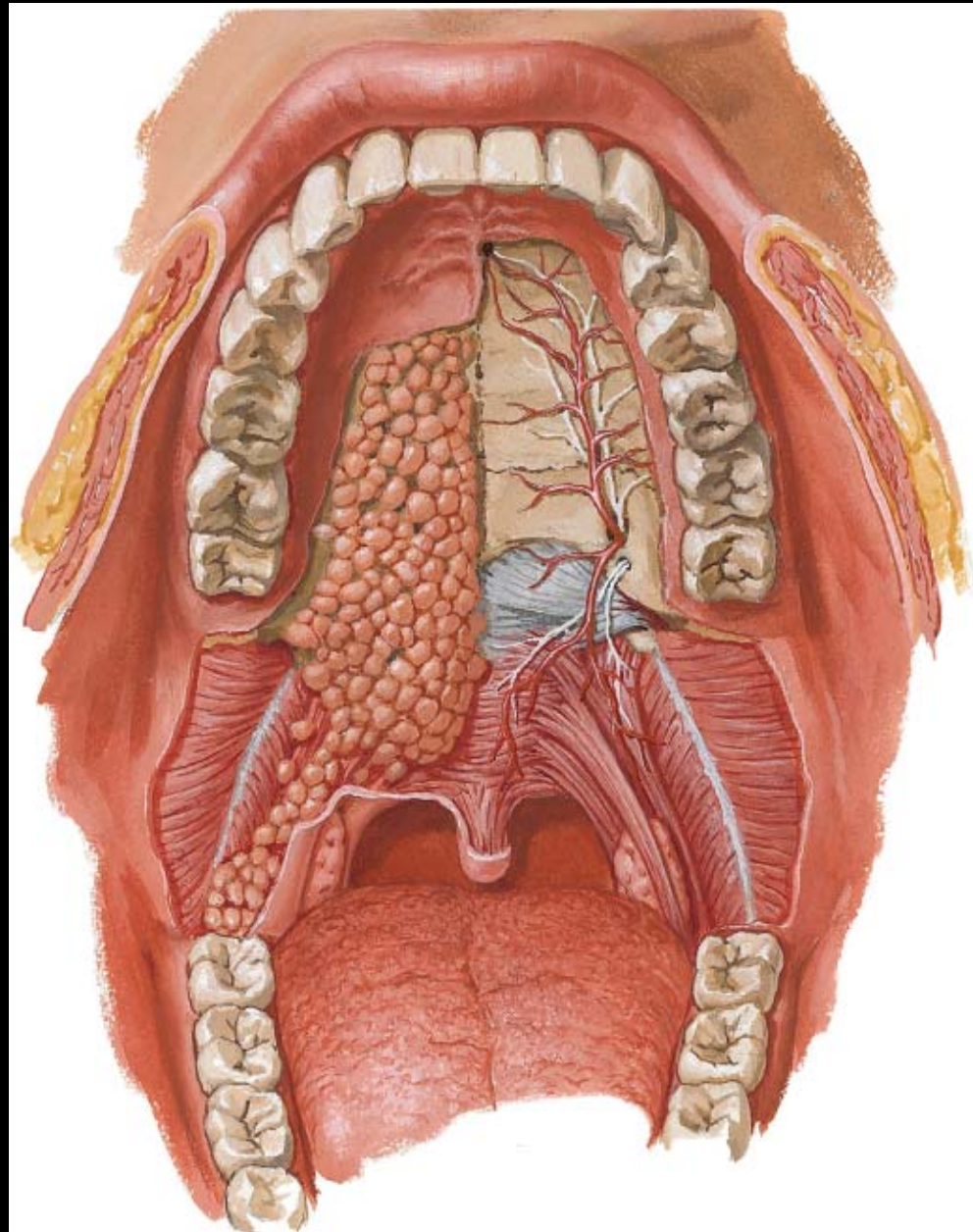
Levator veli palatini m.

(CN X)



Palate





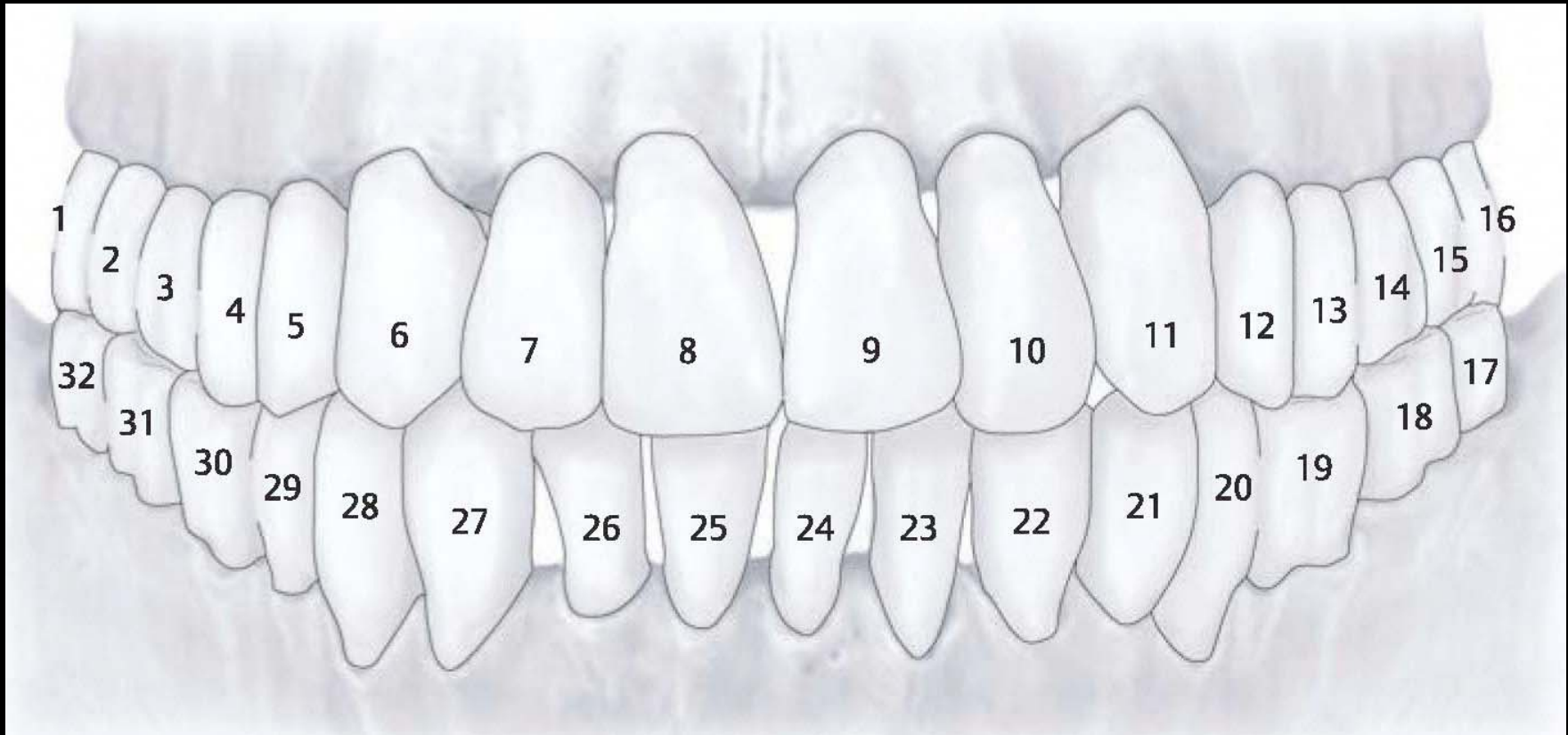
Anterior view; Hard and Soft Palates

A lesion to which cranial nerve will result in the following symptoms observed in this patient?

- A. Left CN V-3**
- B. Left CN IX**
- C. Left CN X**
- D. Right CN V-3**
- E. Right CN IX**
- F. Right CN X**

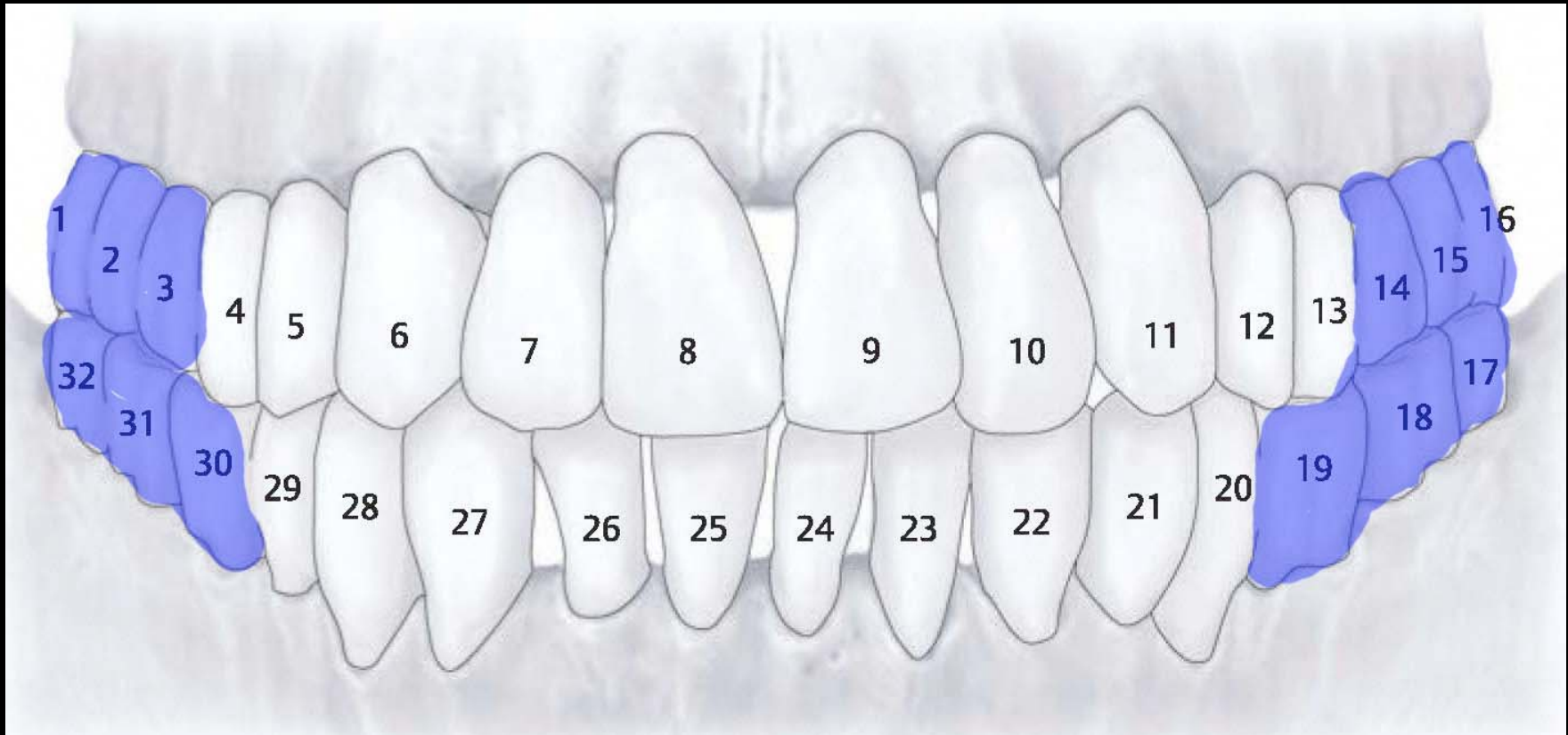
4) Teeth

Numbering



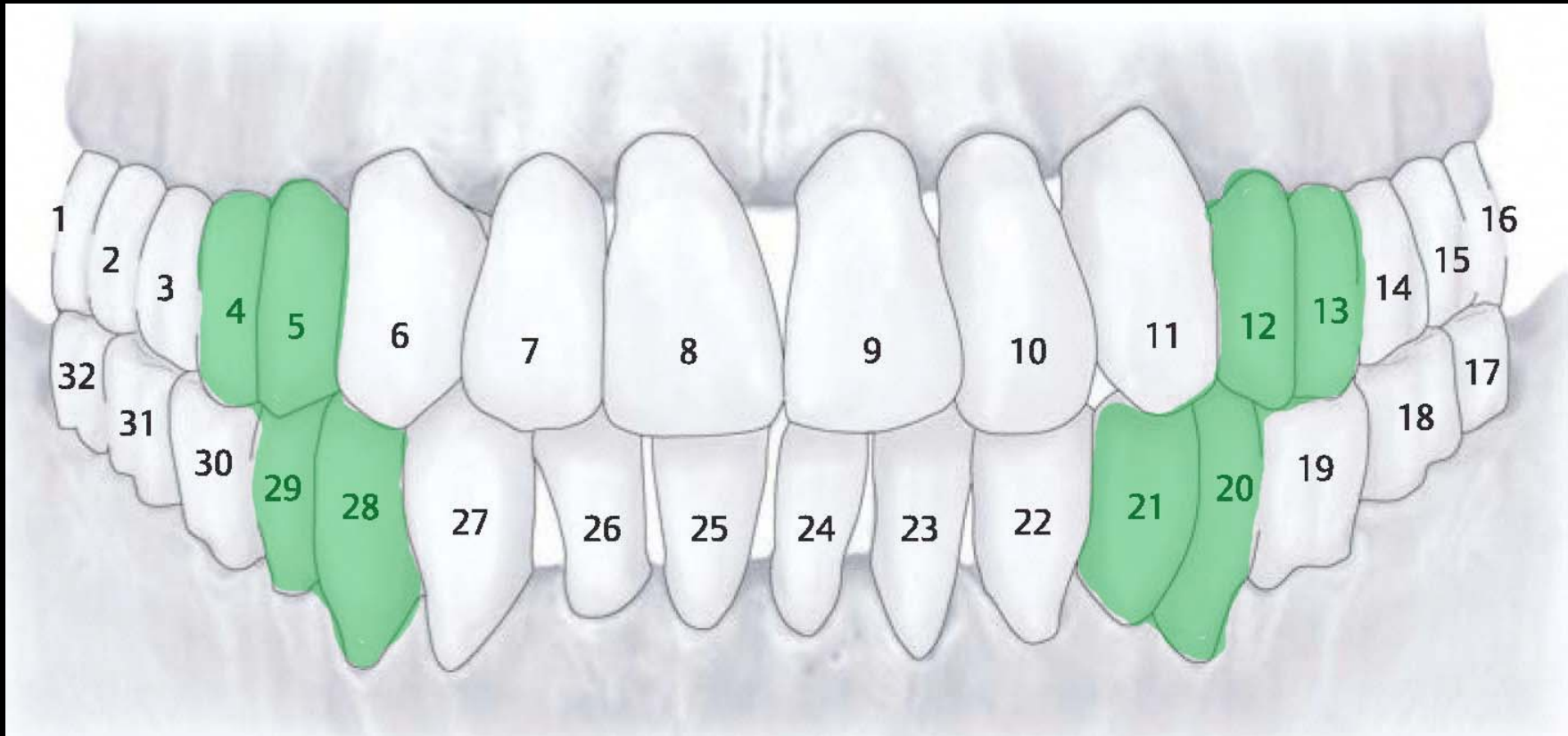
4) Teeth

Molars



4) Teeth

Premolars



4) Teeth

Canines



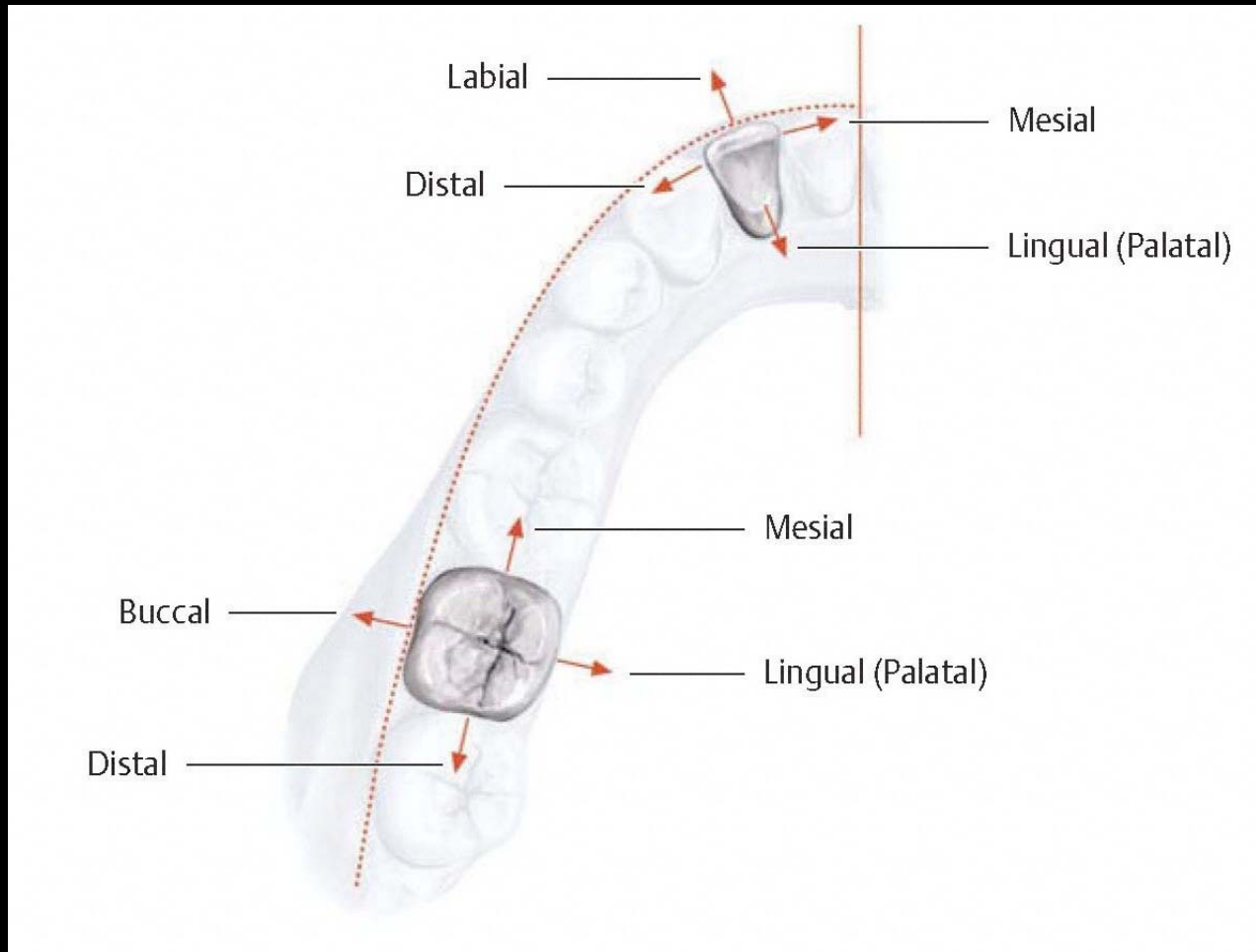
4) Teeth

Incisors



4) Teeth

Directional terms



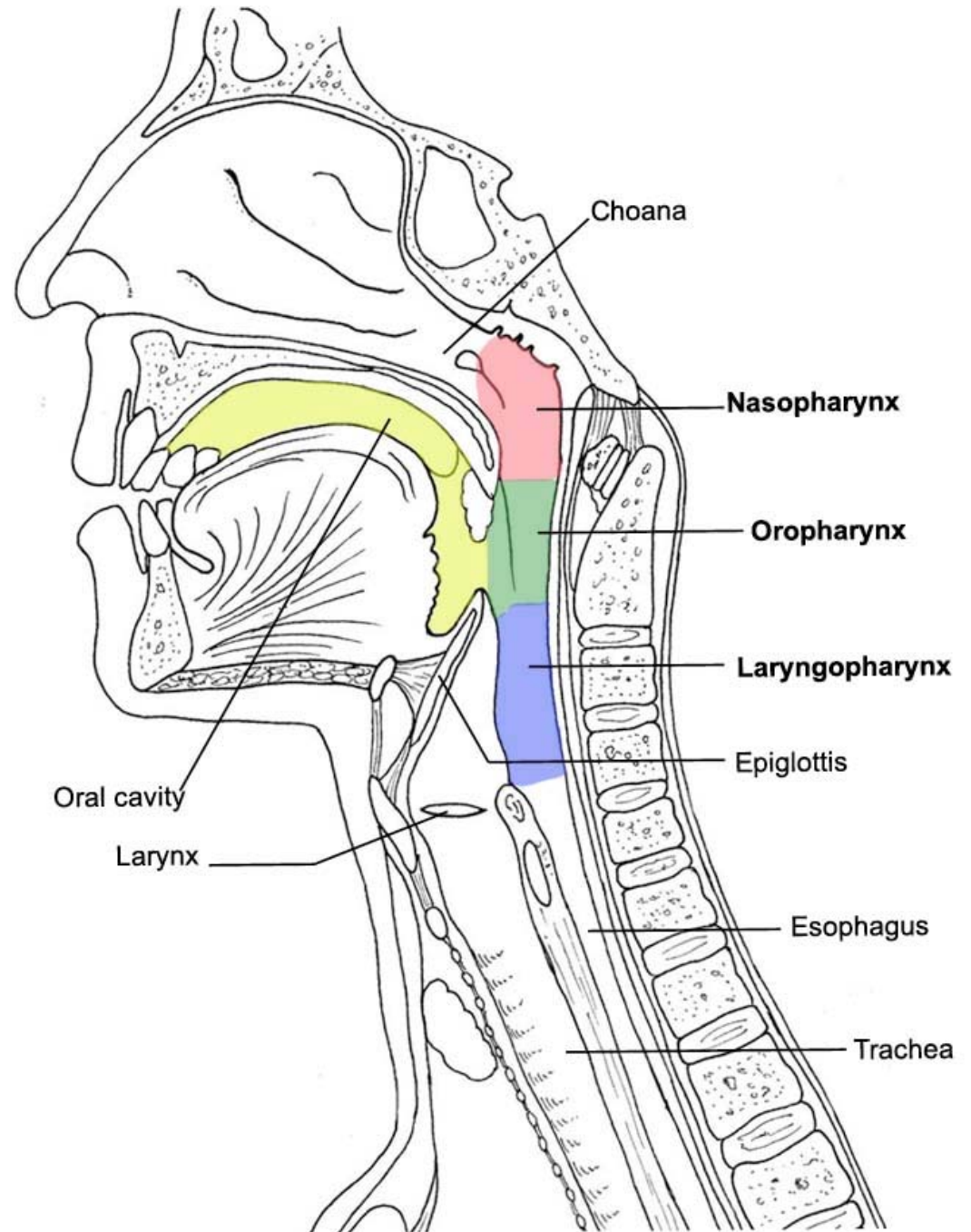
Start G21B

- go to page 75

1) Pharynx

Regions

- Nasopharynx
- Oropharynx
- Laryngopharynx

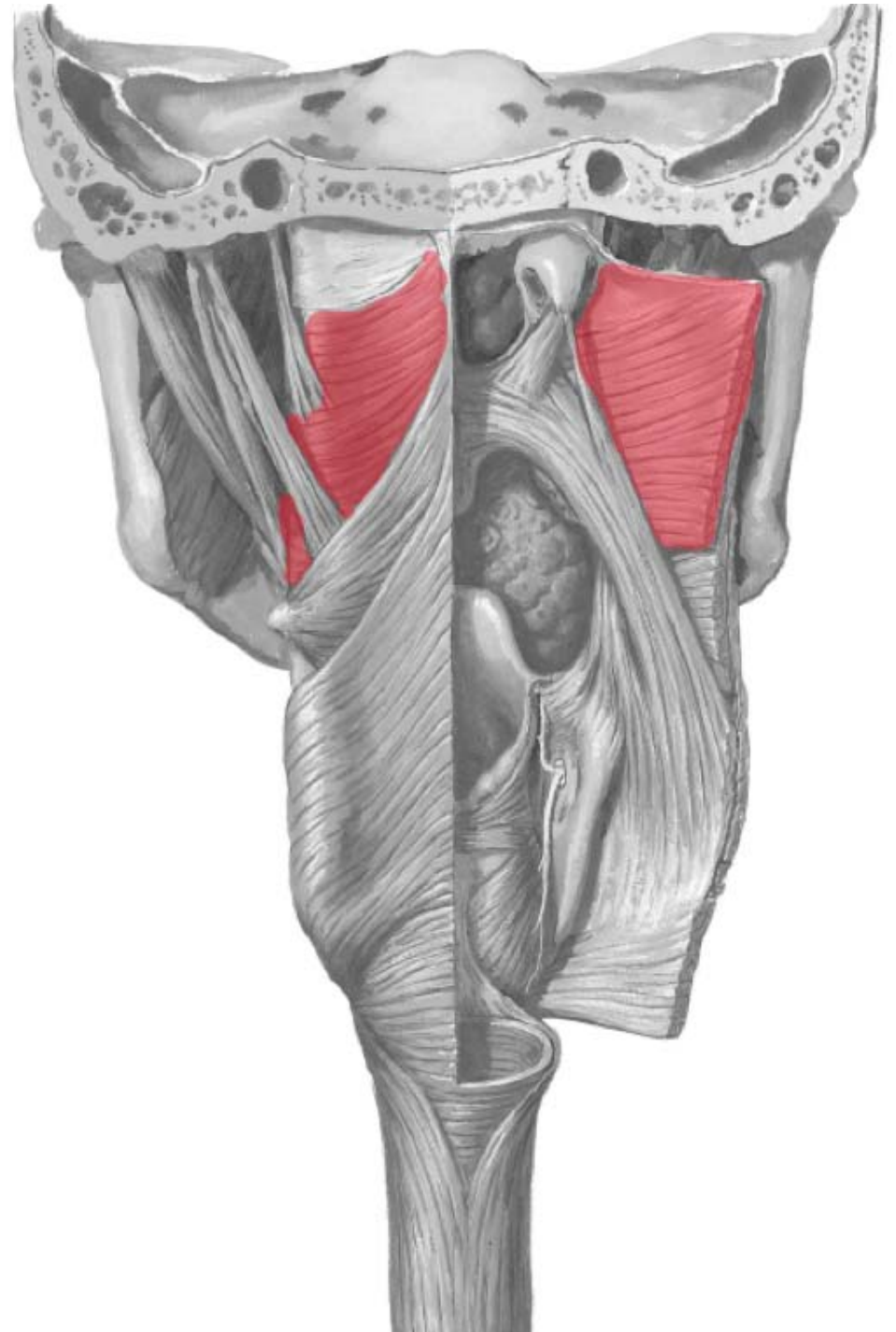


Sagittal section through the head and neck

1) Pharynx

Muscles

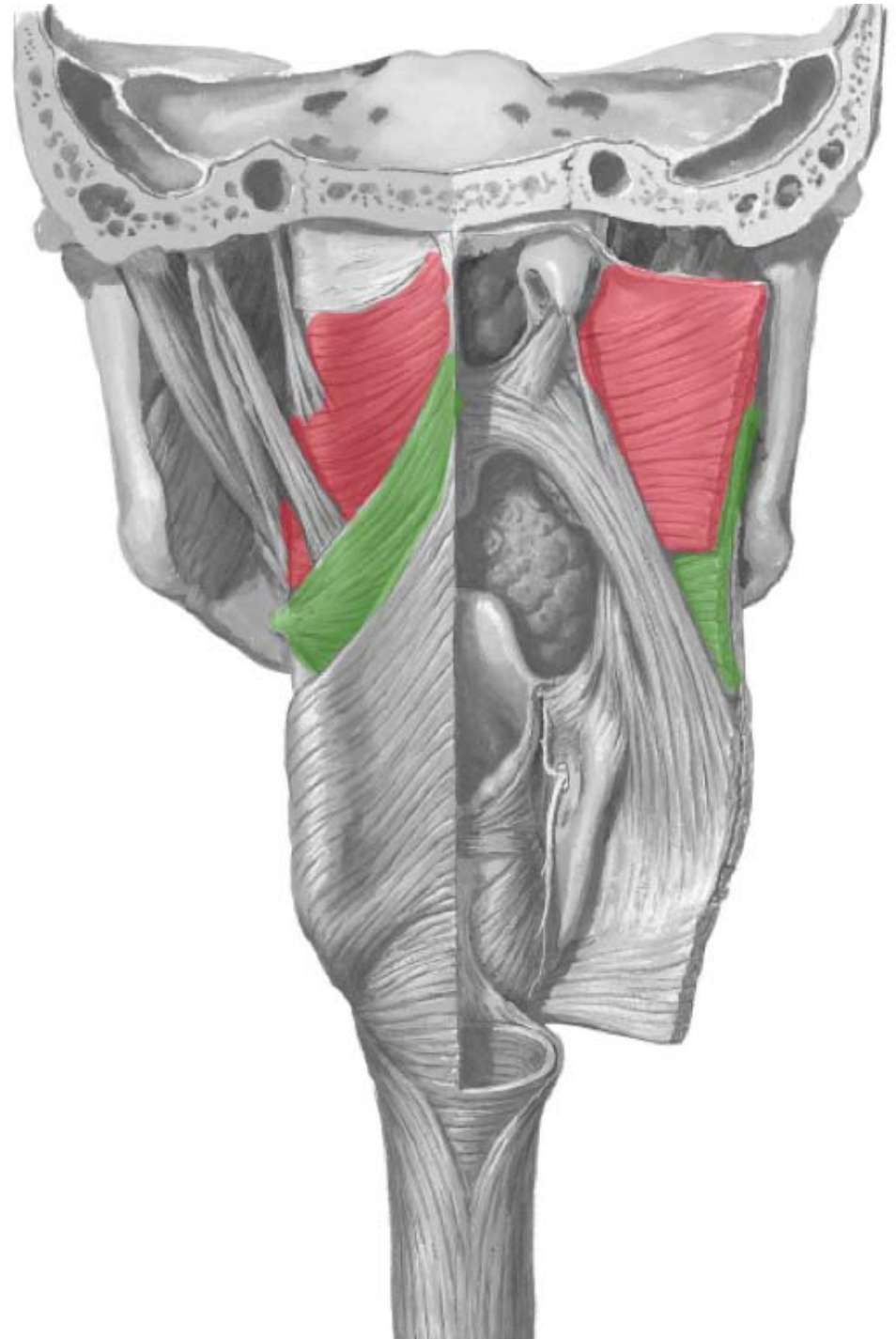
- Superior pharyn. constrictor
- Middle pharyn. constrictor
- Inferior pharyn. constrictor



1) Pharynx

Muscles

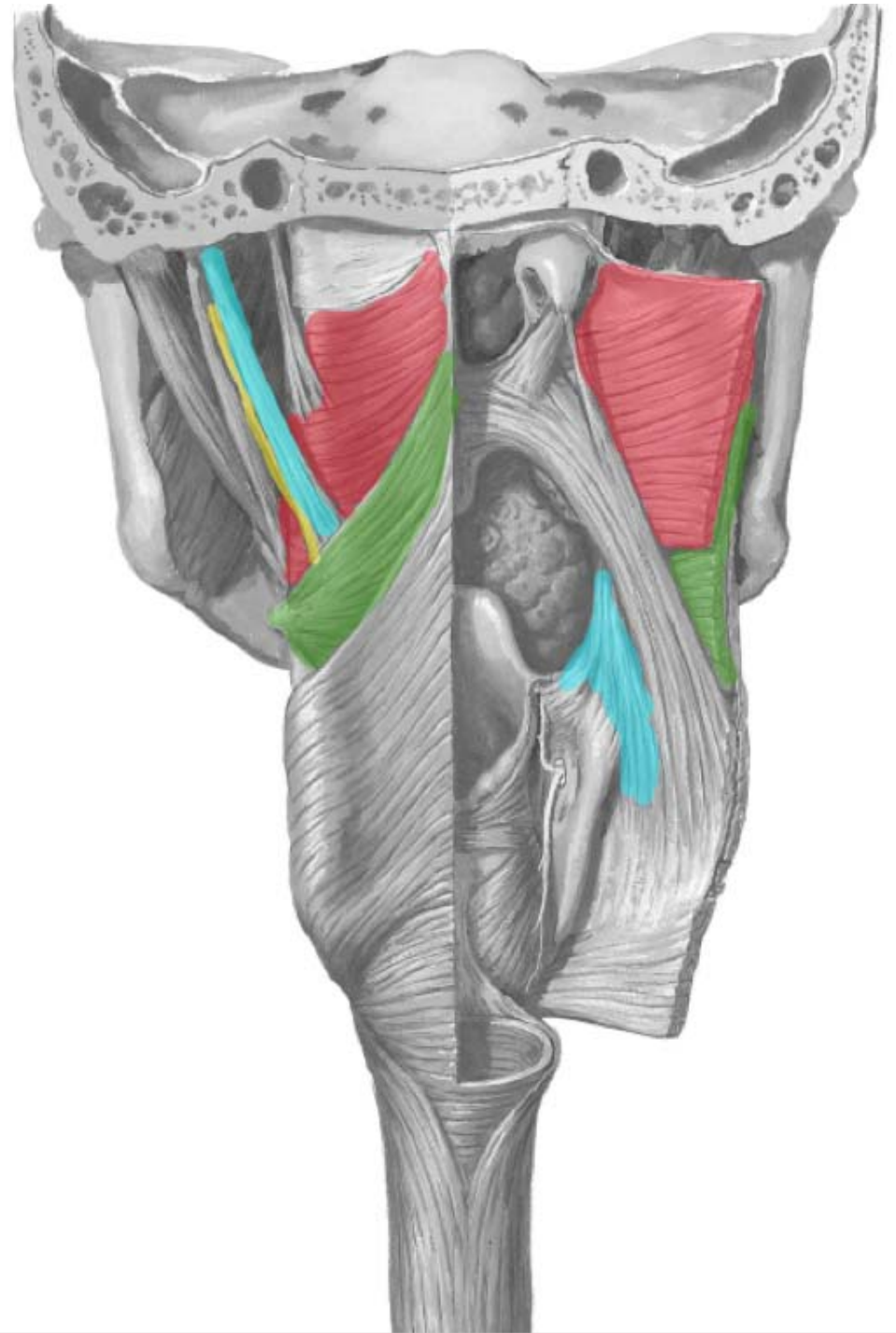
- Superior pharyn. constrictor
- Middle pharyn. constrictor
- Inferior pharyn. constrictor



1) Pharynx

Muscles

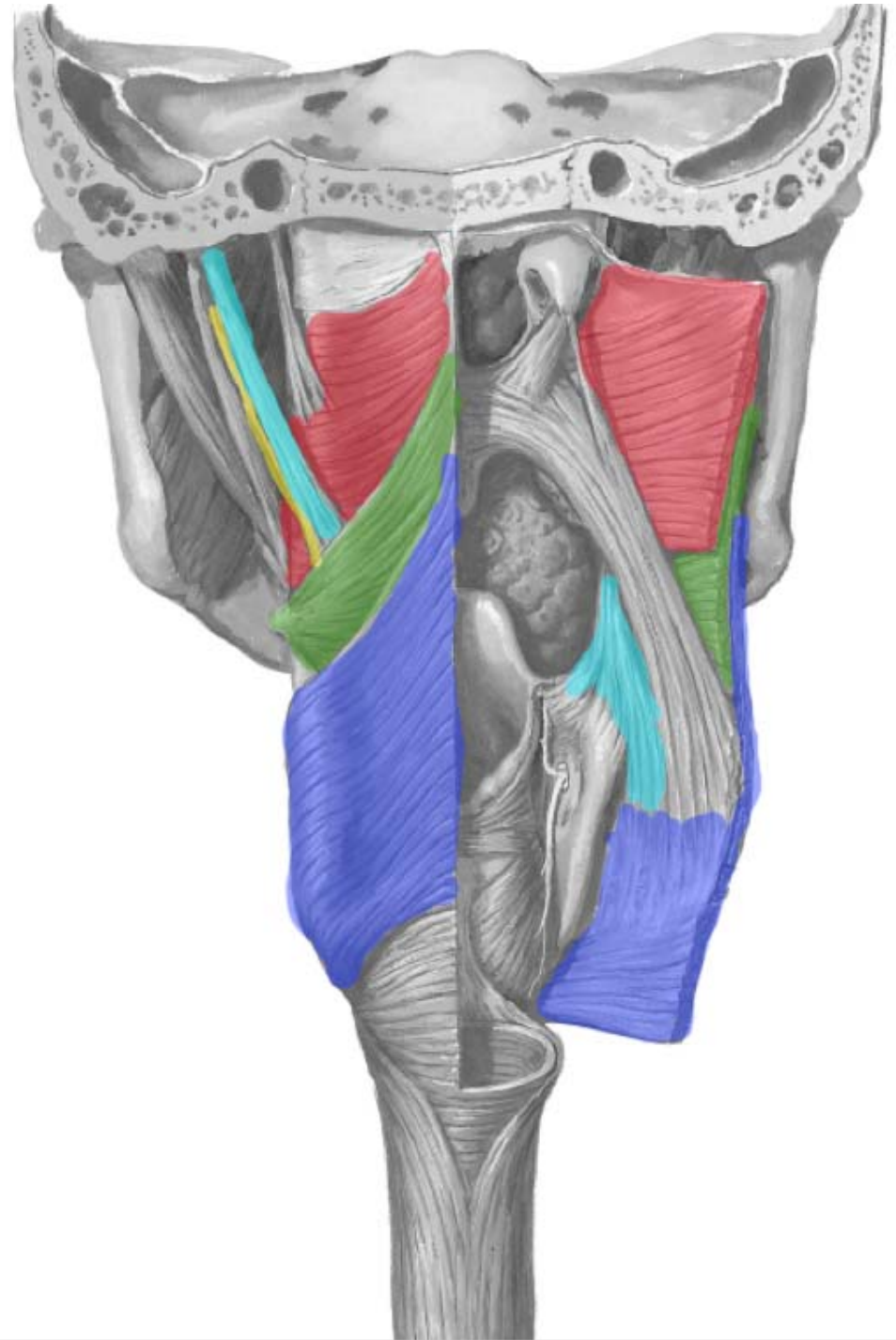
- Superior pharyn. constrictor
- Middle pharyn. constrictor
- Inferior pharyn. constrictor



1) Pharynx

Muscles

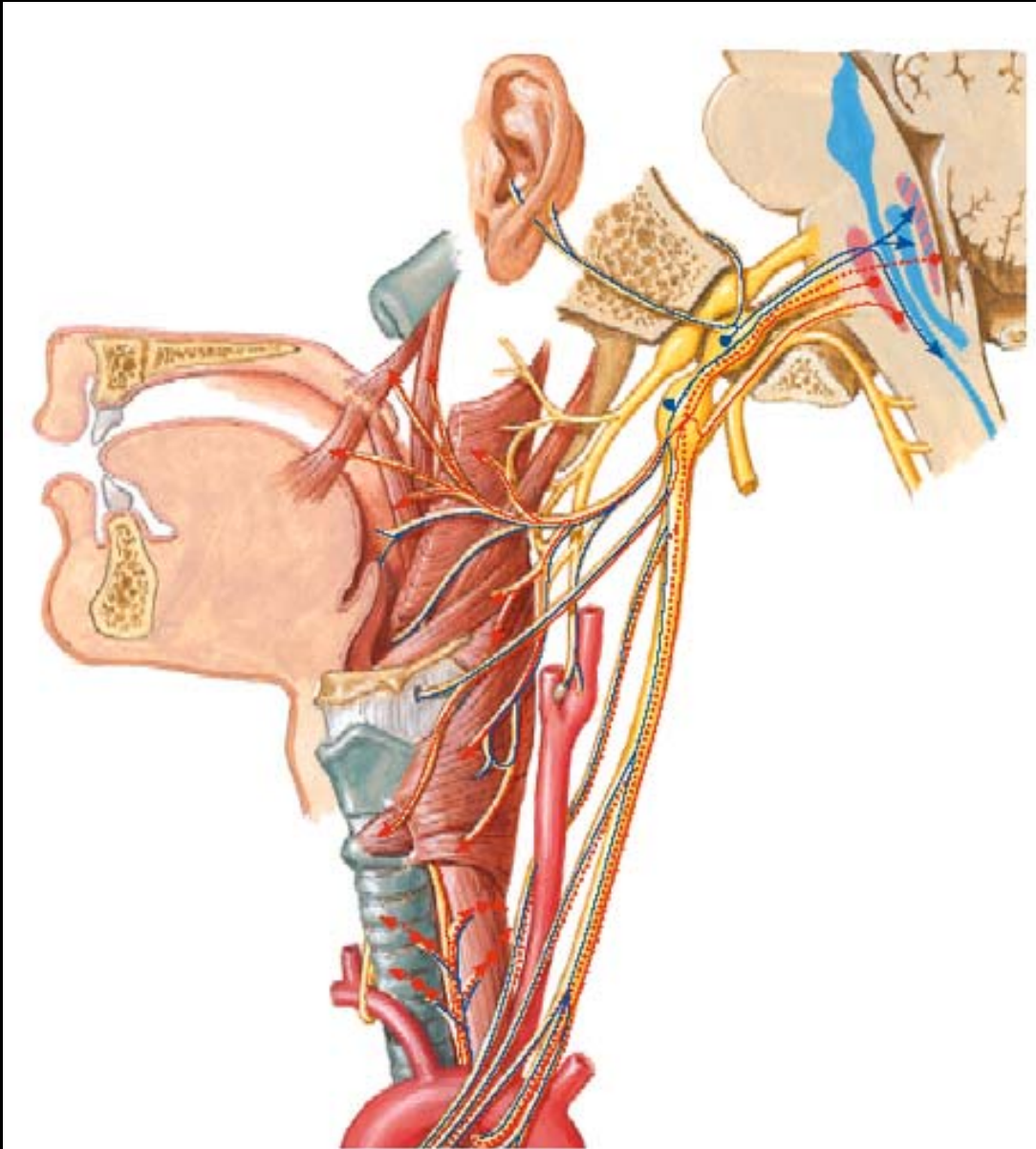
- Superior pharyn. constrictor
- Middle pharyn. constrictor
- Inferior pharyn. constrictor



1) Pharynx

Muscles

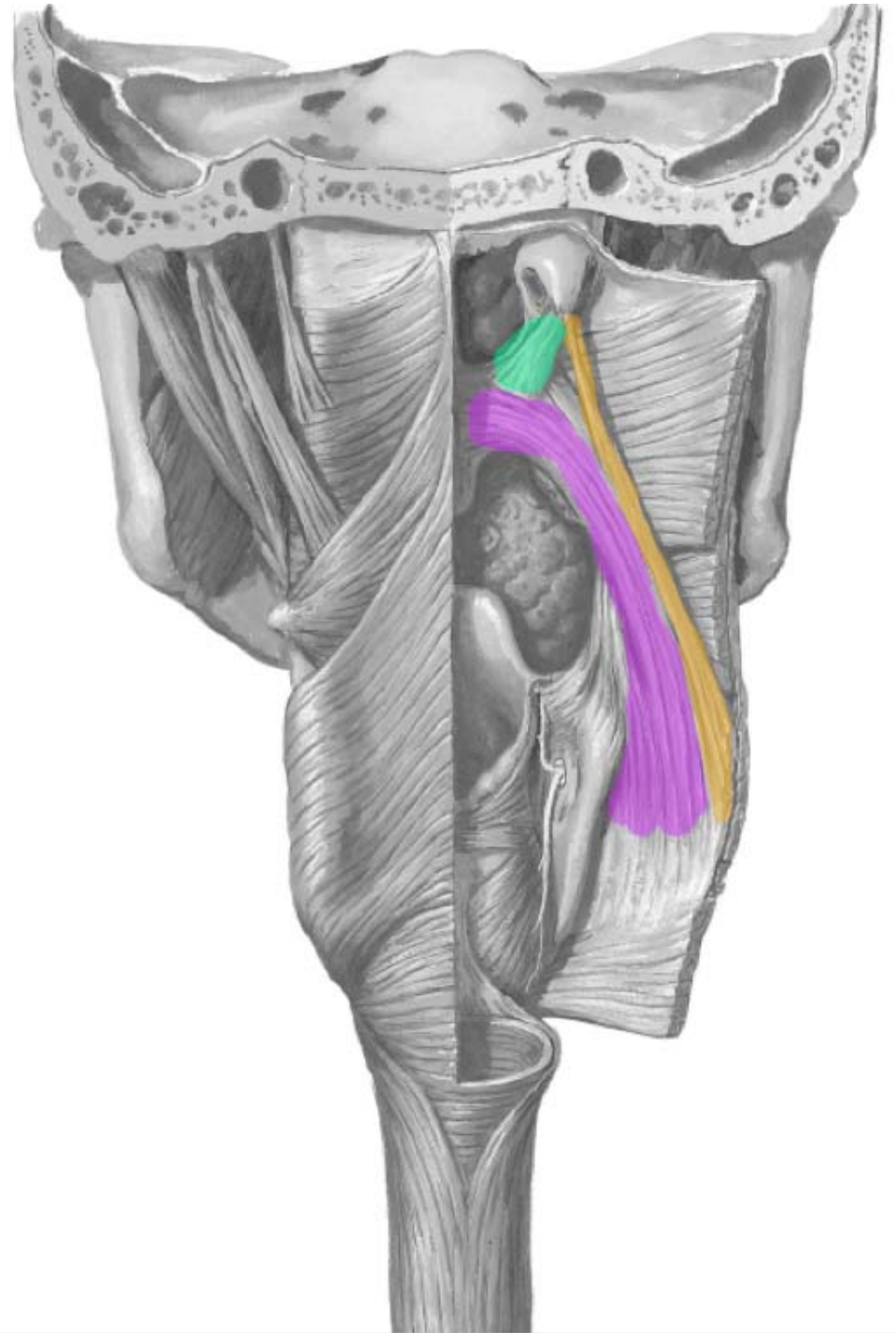
- Superior pharyn. constrictor
- Middle pharyn. constrictor
- Inferior pharyn. constrictor



1) Pharynx

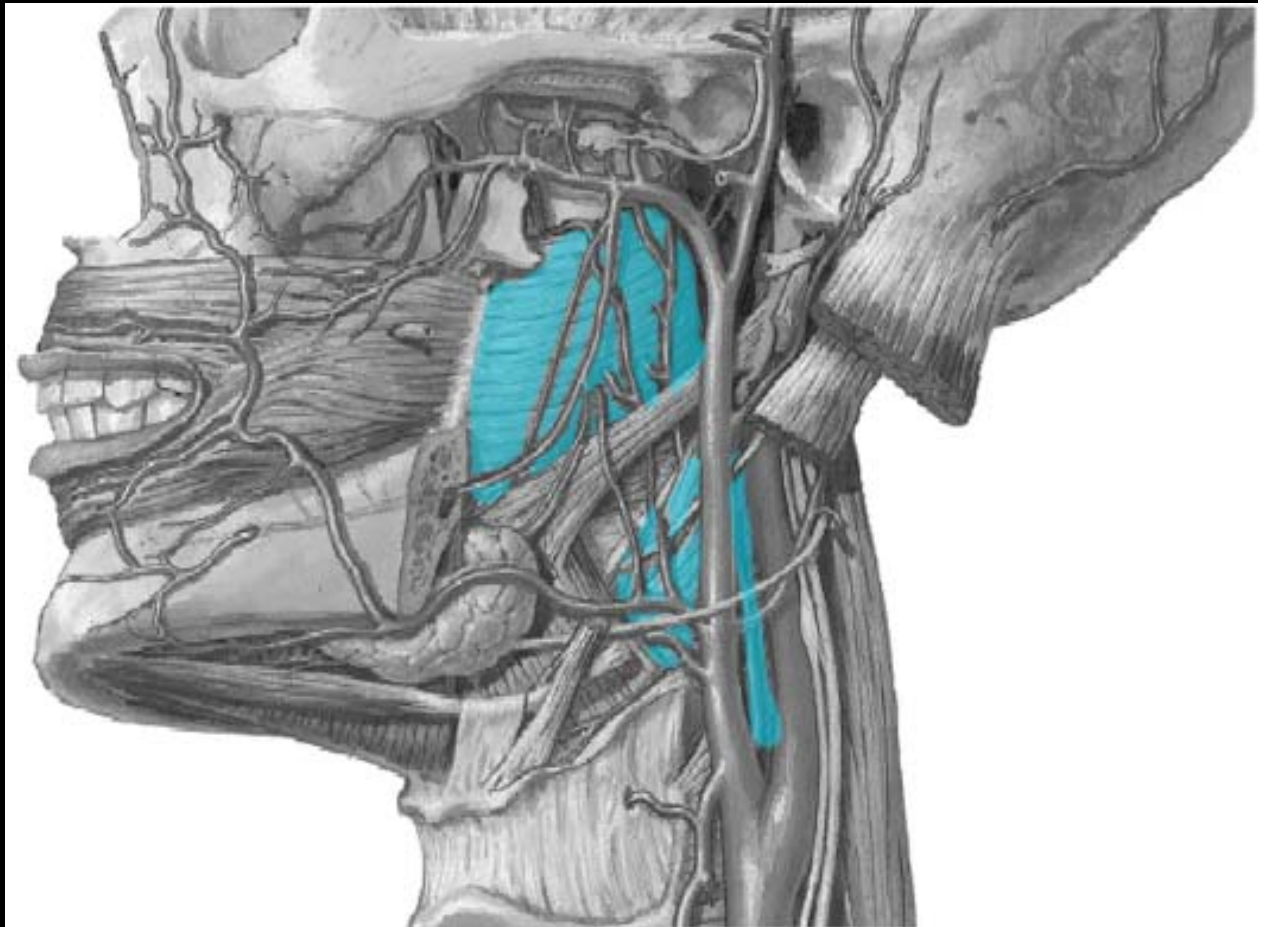
Muscles

- Palatopharyngeus
- Salpingopharyngeus



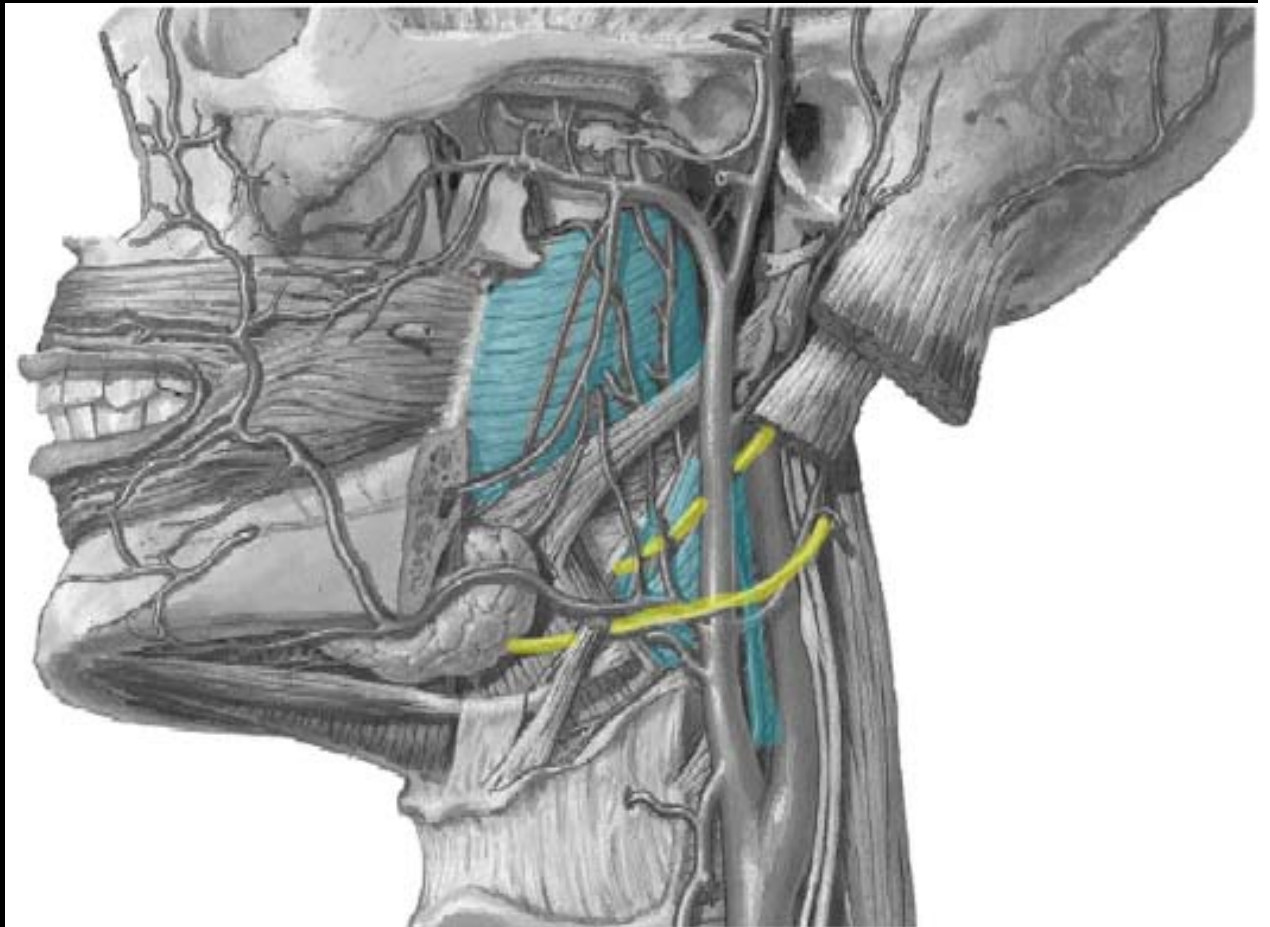
1) Pharynx

- Pharyngeal constrictors



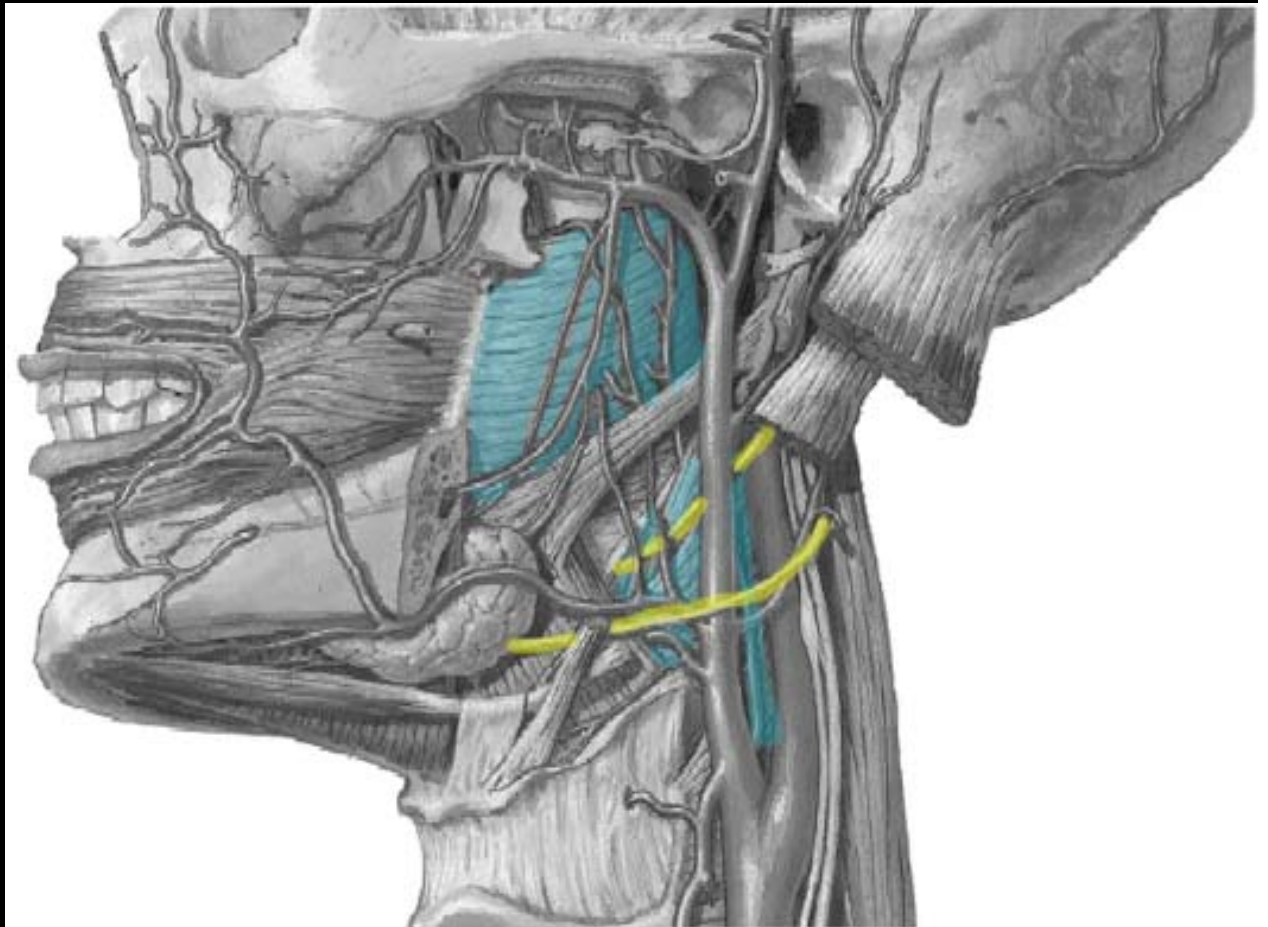
1) Pharynx

- Nerves?



1) Pharynx

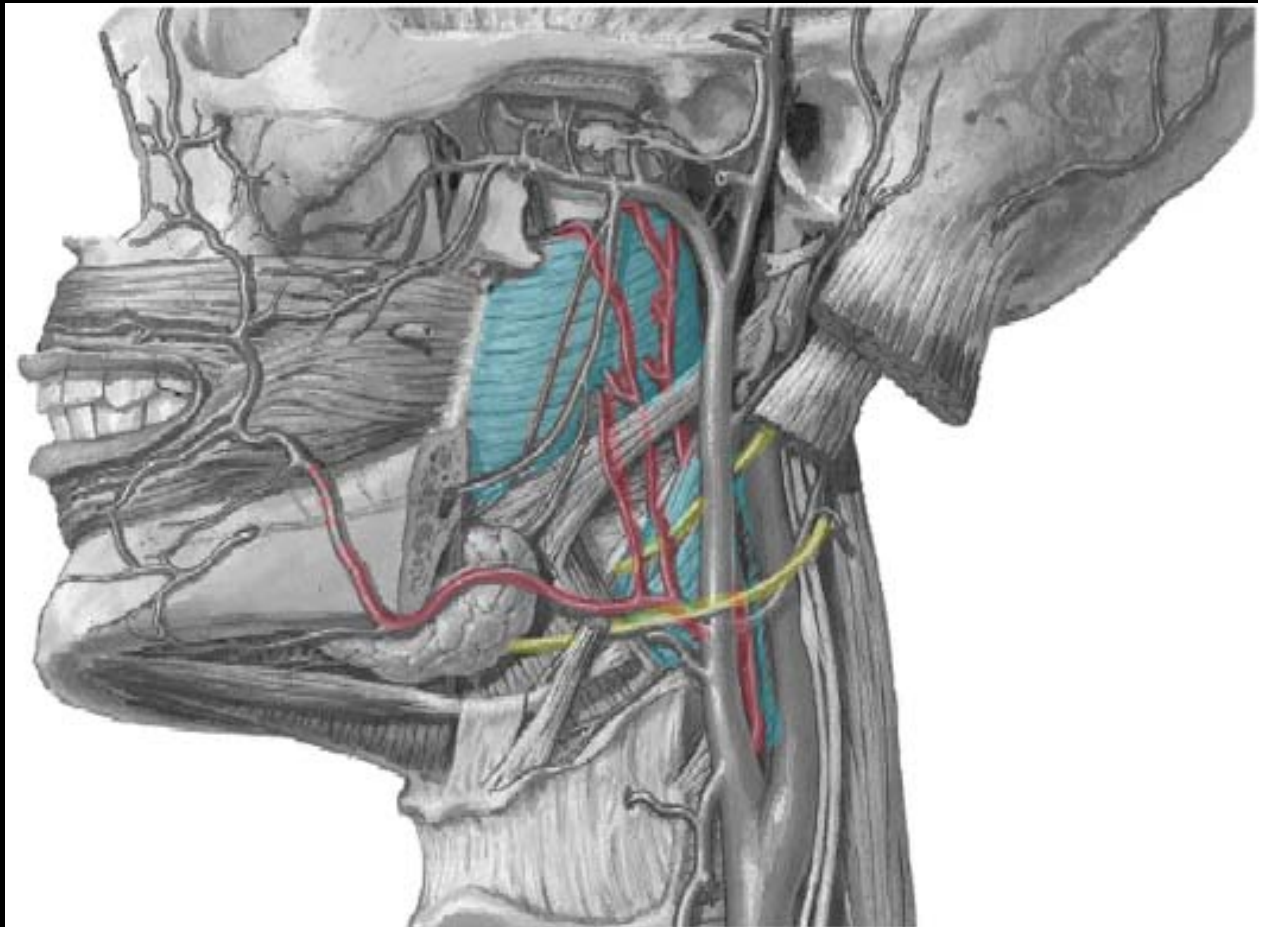
- CN IX
- CN XII



1) Pharynx

Vascularization

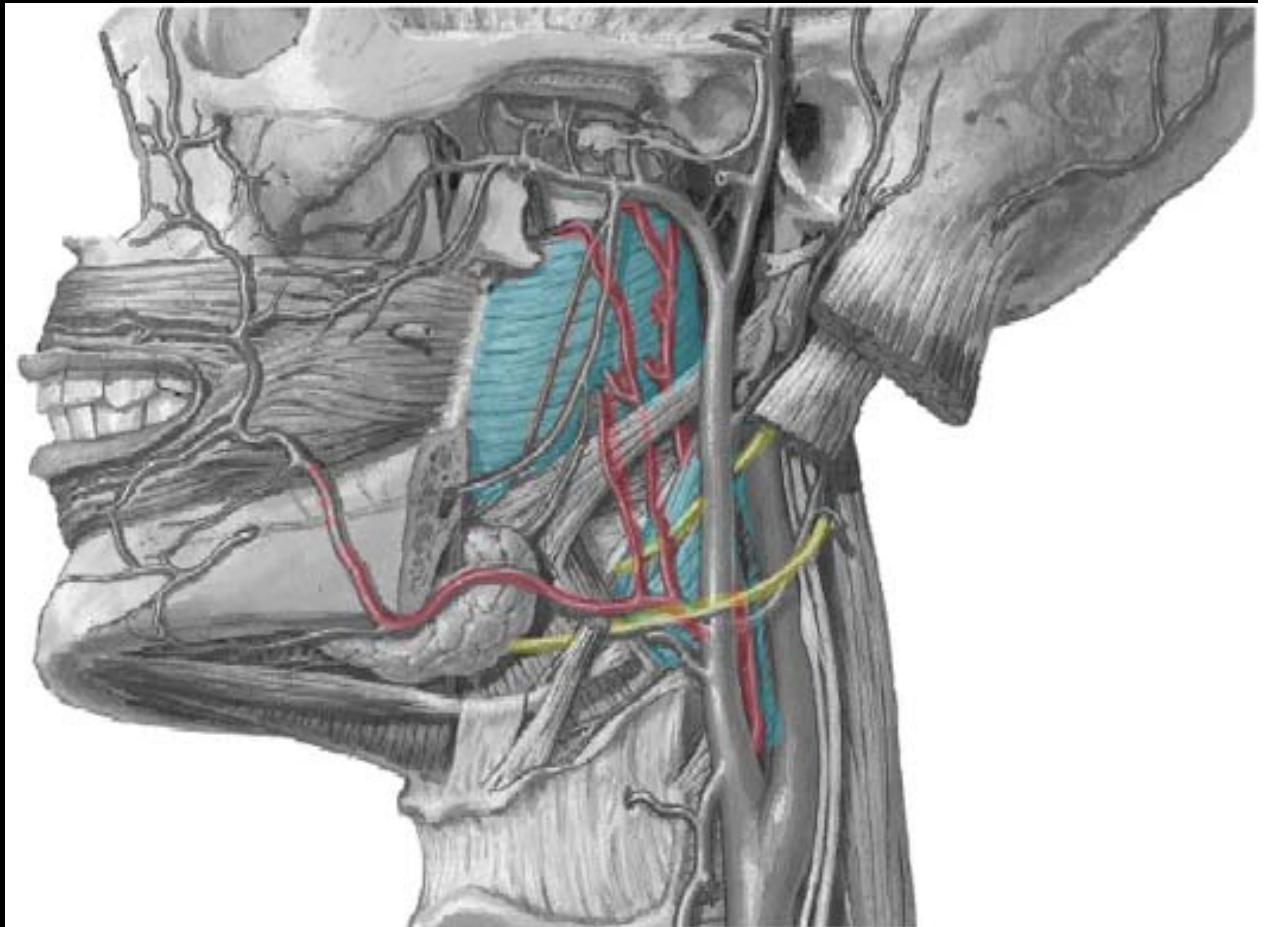
- ?



1) Pharynx

Vascularization

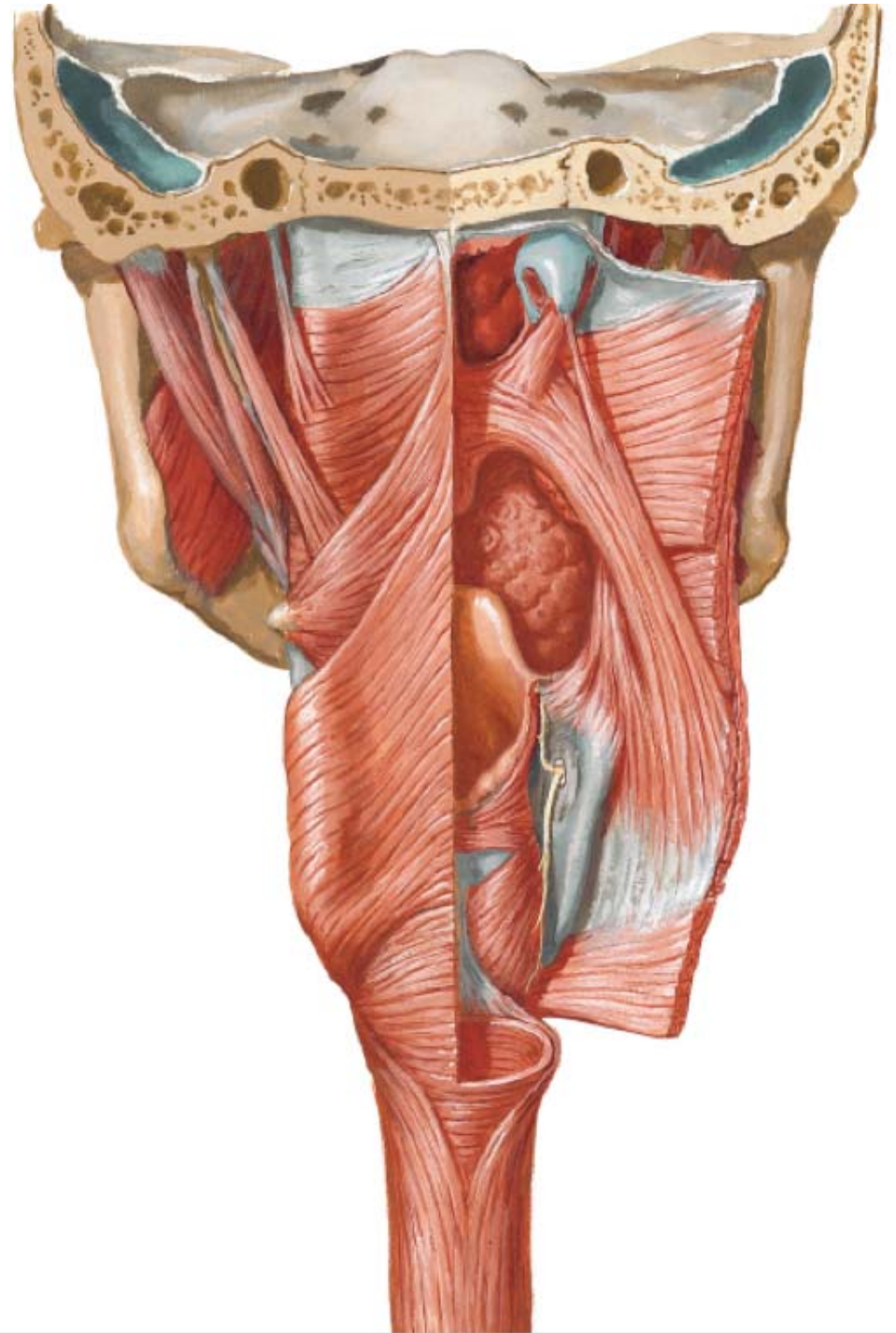
- Ascending pharyngeal a.
- Ascending palatine
- Tonsillar a.



1) Pharynx

Innervation (Motor)

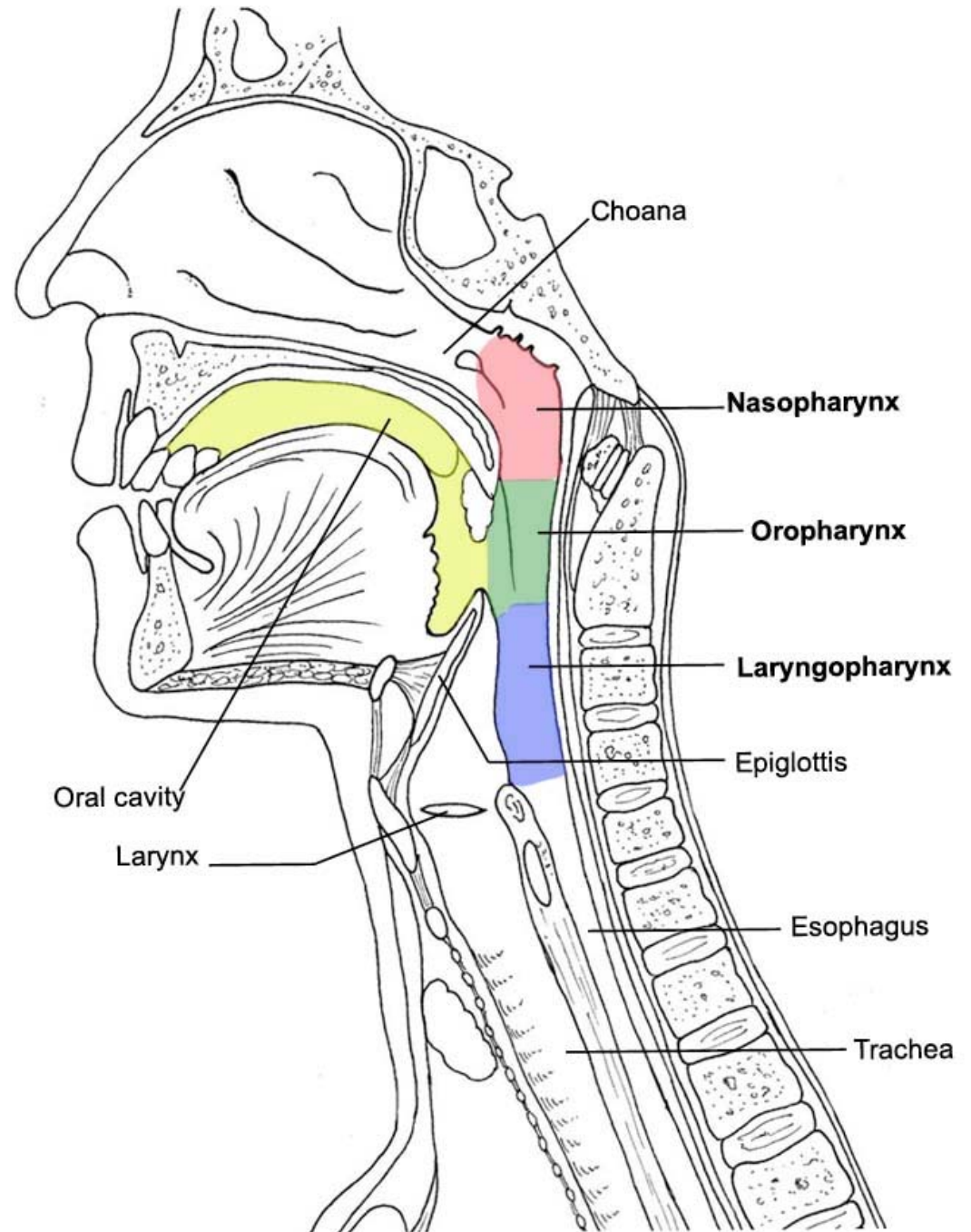
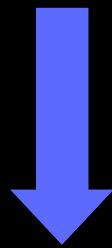
- **CN X**
- (except stylopharyngeus IX)



1) Pharynx

Innervation (Sensory)

- Nasopharynx (V-2)
- Oropharynx (IX)
- Laryngopharynx (X)



Sagittal section through the head and neck

Innervation Highyield

Tongue muscles:

Innervation Highyield

Tongue muscles: **CN XII**

Innervation Highyield

Tongue muscles: **CN XII** (except palatoglossus m. ... CN X)

Palate muscles:

Innervation Highyield

Tongue muscles: **CN XII** (except palatoglossus m. ... **CN X**)

Palate muscles: **CN X**

Innervation Highyield

Tongue muscles: **CN XII** (*except* palatoglossus m. ... **CN X**)

Palate muscles: **CN X** (*except* tensor veli palatini ... **CN V-3**)

Pharyngeal muscles:

Innervation Highyield

Tongue muscles: **CN XII** (*except* palatoglossus m. ... **CN X**)

Palate muscles: **CN X** (*except* tensor veli palatini ... **CN V-3**)

Pharyngeal muscles: **CN X**

Innervation Highyield

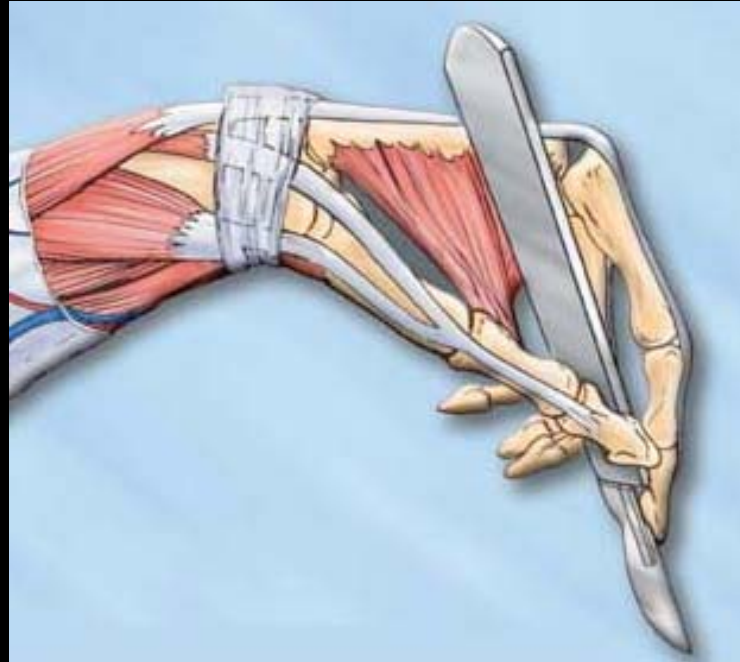
Tongue muscles: **CN XII** (*except* palatoglossus m. ... **CN X**)

Palate muscles: **CN X** (*except* tensor veli palatini ... **CN V-3**)

Pharyngeal muscles: **CN X** (*except* stylopharyngeus m. ... **CN IX**)

The gag reflex is conducted by touching the back of the patient's throat and watching for the patient to gag. Identify the sensory and motor limbs for this reflex?

- A. CN V-3**
- B. CN VII**
- C. CN IX**
- D. CN X**
- E. CN XI**
- F. CN XII**



THANK-YOU